



Scal ed Agil e Fr amewor k (SAFe) with Pol ar ion

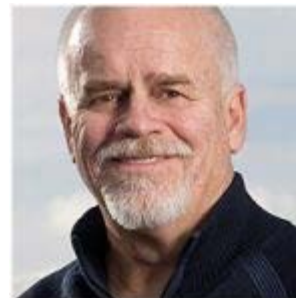
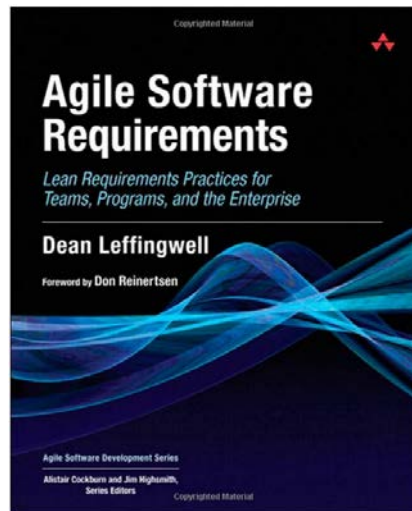
Steffen Weniger, T-Systems International GmbH

Polarion Live! – EMEA User Conference 2015 - 13.10.2015 - Stuttgart

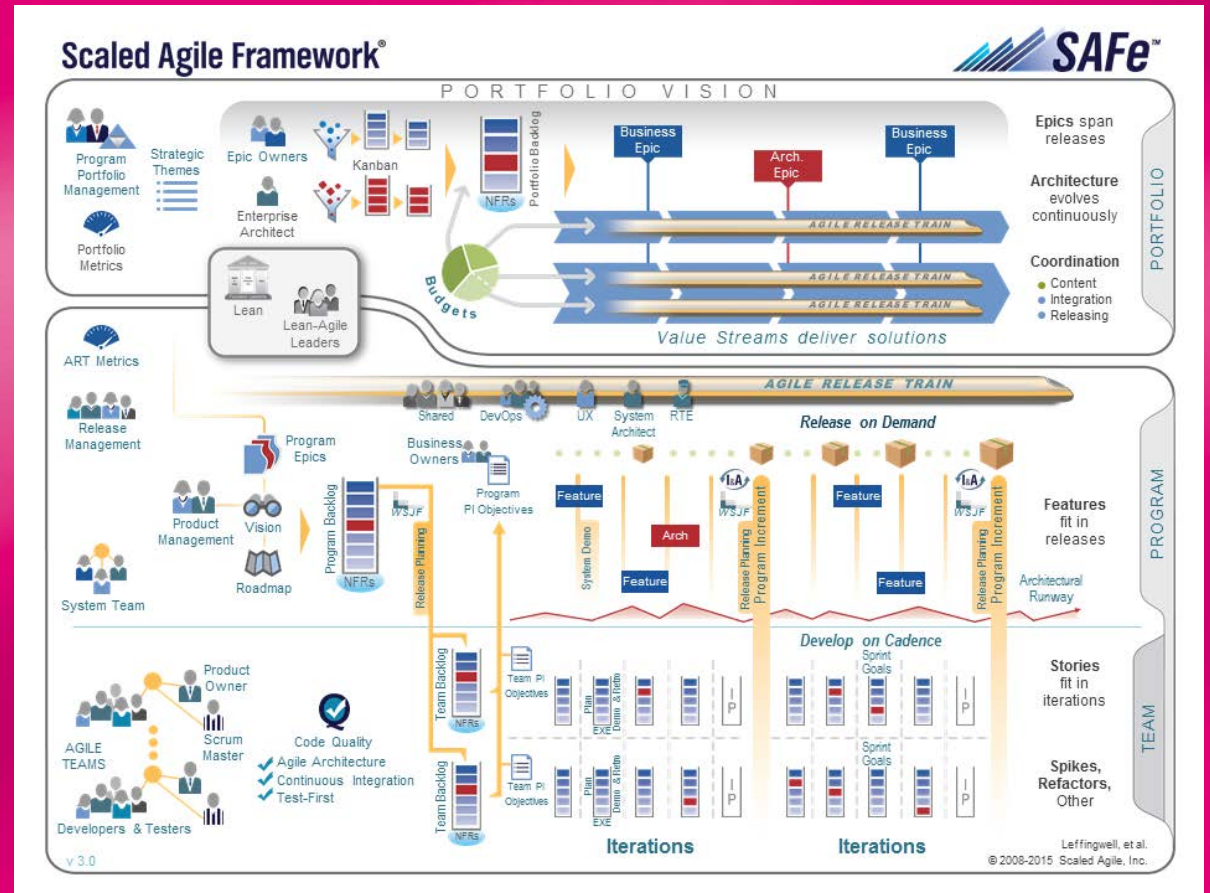
T · · Systems ·

SCALED AGILE FRAMEWORK with Pol ar ion

How I happened t o give t his pr esent at ion



THE TEAM LEVEL



THE TEAM LEVEL AN OVERVIEW

PEOPLE

Agile Team

- Developers and Testers
- Product Owner
- SCRUM Master

Define objectives

Work on cadence

Produce working software

Ensure quality

Measure and visualize progress

ELEMENTS

Story

Spikes

Tasks

Iteration

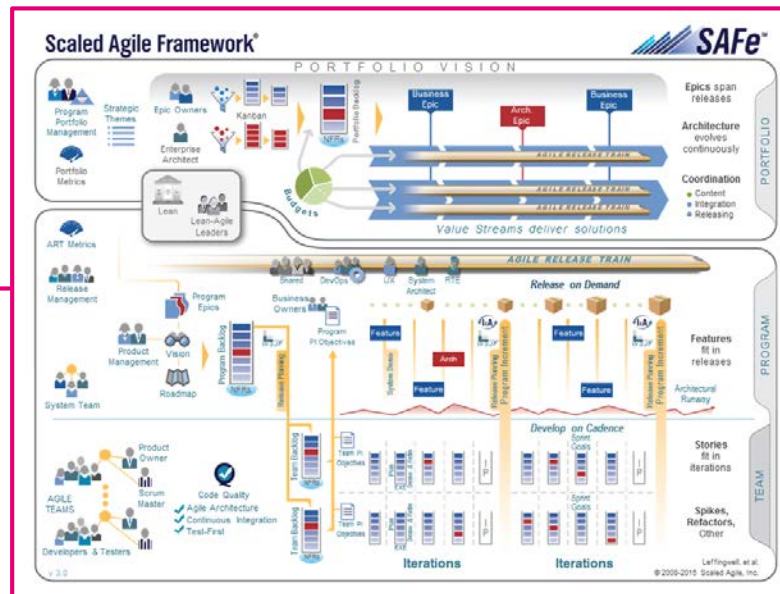
Working Software Increment

Team Backlog

Team Metrics

Story Board

Burndown Chart

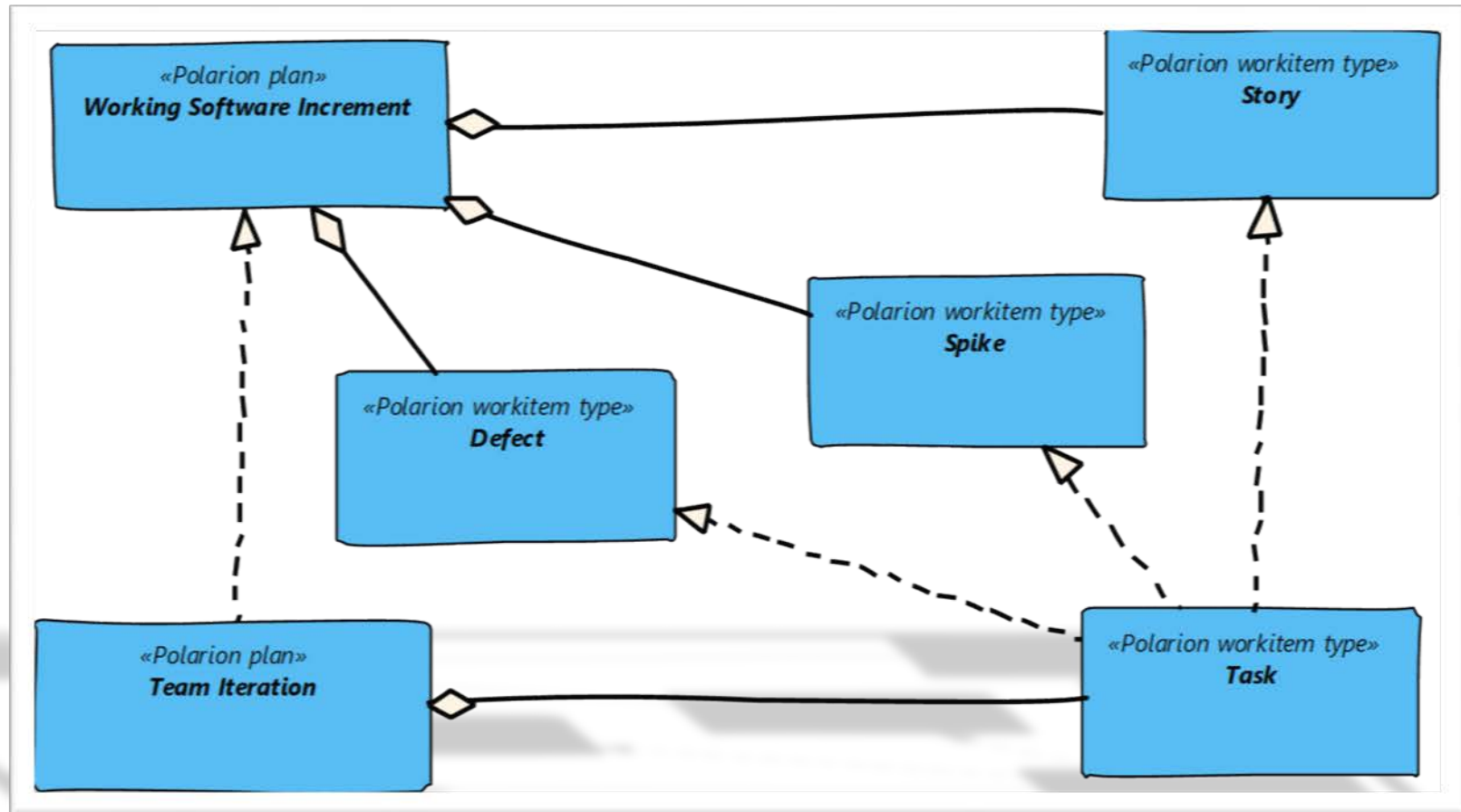


ACTIVITIES

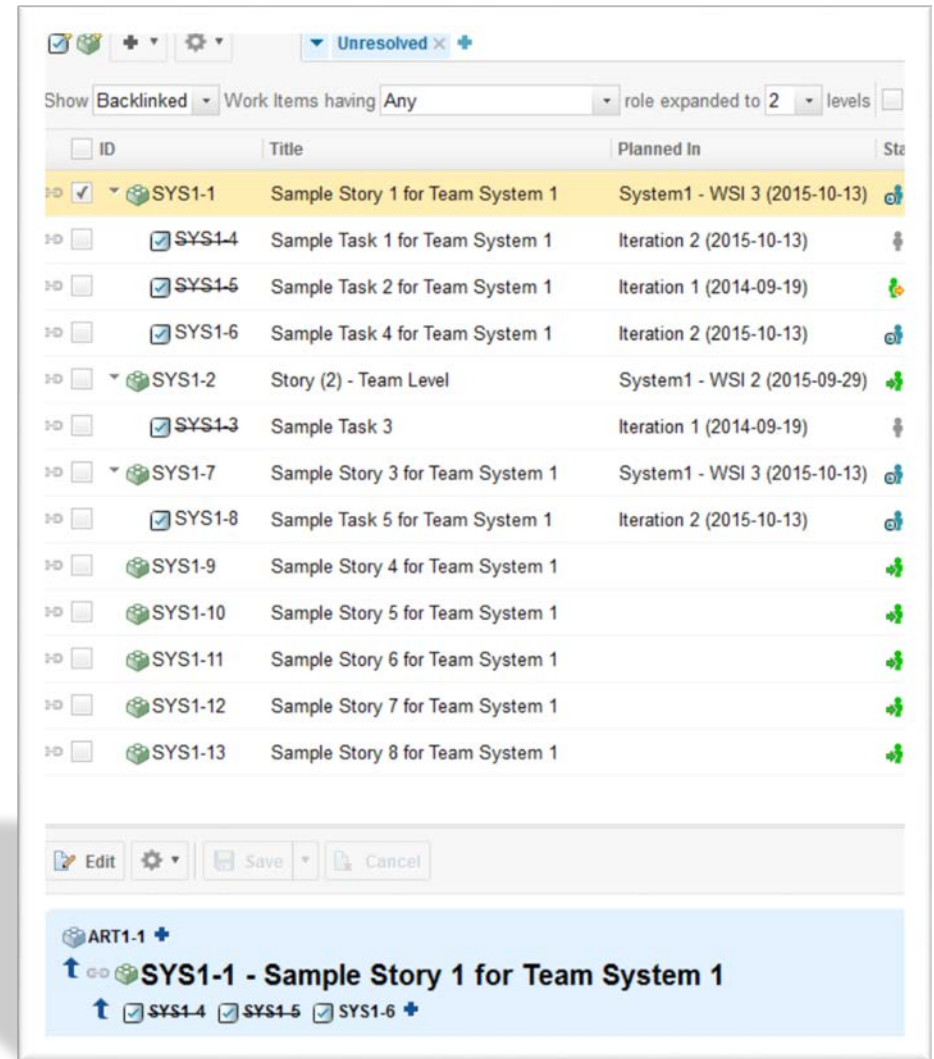
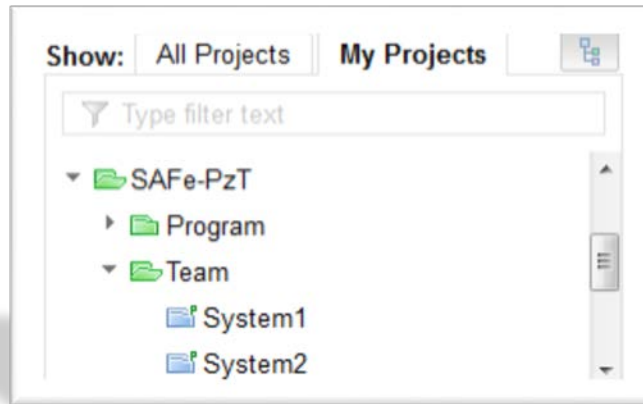
TOOLS AND METRICS

THE TEAM LEVEL

THE THEORY BEHIND WORKITEMS AND RELATIONS



THE TEAM LEVEL WORKITEMS, PLANS AND RELATIONS IN POLARION



T · · Systems ·

THE TEAM LEVEL LETS VISUALIZE THE Planning in Polarion

Please Status: Open, In Progress PIT Status: Open, In Progress Apply

	PIT T2/2015	PIT T3/2015	PIT T1/2016	PIT T2/2016	PIT T3/2016
JMS PzT DSP/SSP T2/2015 015-07-13 - 2015-10-02 STB					
JMS PzT R04 015-09-14 - 2015-10-23 STB					
JMS PzT R05 015-10-26 - 2015-12-04 STB					
JMS PzT R06 015-12-07 - 2016-01-29 STB					
JMS PzT DSP/SSP T3/2015 015-11-09 - 2016-02-12 STB					
JMS PzT R07 016-02-01 - 2016-03-11 STB					

Iteration Planning

Iteration	Status	Team Capacity	Planned Work	Remaining Work	Done Work	Progress	Workitems
# 2015 - T2 - 4 (2015-09-14 - 2015-10-02)	In Progress	1151.0	875.0	200.0	675.0 (77.14285850524902%)	25d To Do Done: 84d 5h Ideal progress: 109d 5h	Open in Table Open 85 Planned Items in Table View

Iteration	Status	Team Capacity	Planned Work	Remaining Work	Done Work	Progress	Workitems
							Open in Table Planned Items in Table View

Person: CMS PzT R03 CMS PzT R04

Proki - Status an AMK senden

Person: CMS PzT R04

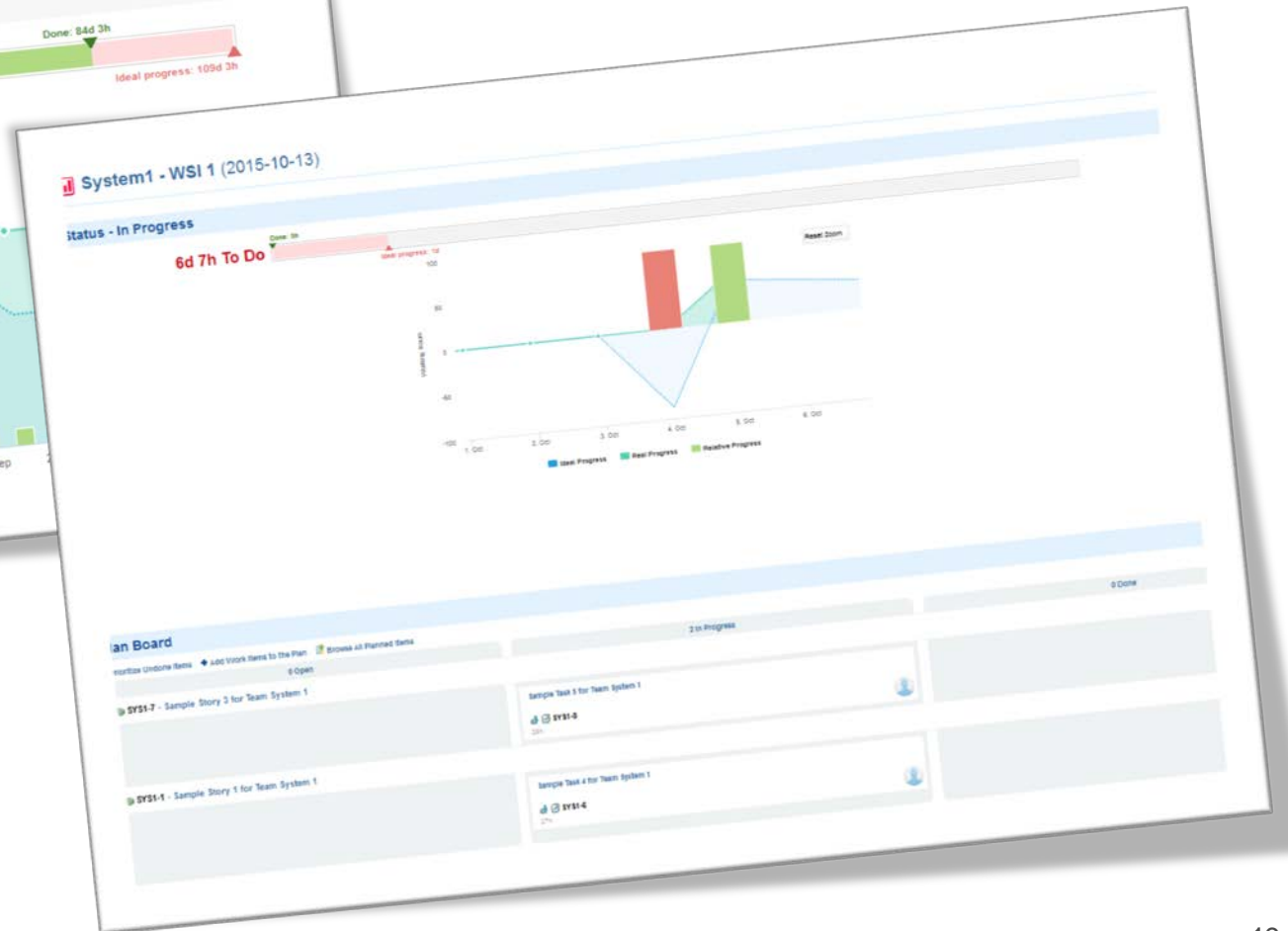
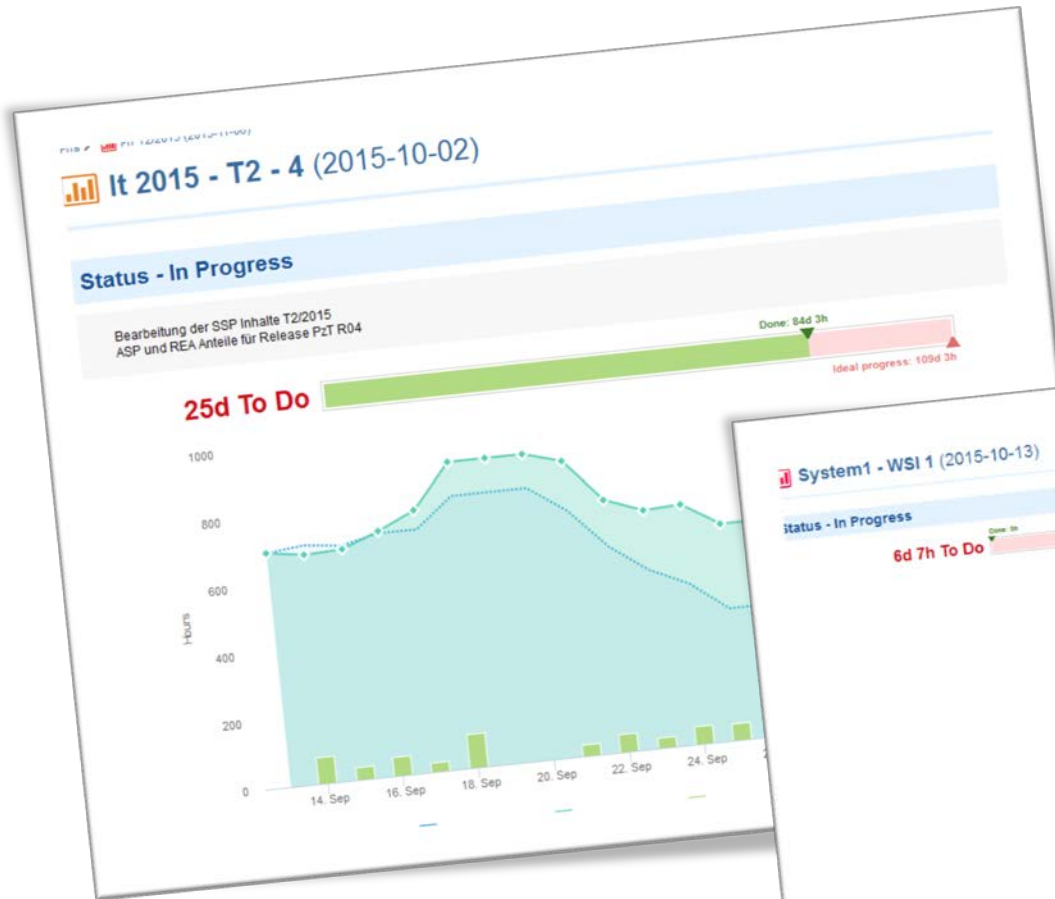
Person: CMS PzT R04

Proki - Email versenden

Person: CMS PzT R03 CMS PzT R04

- CMS-363 - Basisversion Java-Kompo...
- CMS-365 - Betriebs- und Installat...
- CMS-425 - ANT-Script muss Mounts ...
- CMS-367 - Integrationskon-Strate ...
- CMS-456 - Erweiterung Proki für ...
- CMS-366 - Entwicklerleit für Star ...
- CMS-364 - Erweiterung Java-Kompon ...
- CMS-366 - Betriebs- und Installat ...
- CMS-606 - Automatisierter Test DM ...
- CMS-424 - Anpassung Java-Komponen ...
- CMS-360 - ASP Proki - Platzhalte ...
- CMS-324 - ASP: Überarbeitung WSDL ...
- CMS-323 - ASP: Überarbeitung der ...
- CMS-435 - Umsetzbarkeit Nachricht ...
- CMS-426 - Erweiterung Dokumentat ...
- CMS-402 - Realisierung StreamServ ...
- CMS-403 - Entwicklerleit Java-Kom ...
- CMS-368 - ASP Proki - Platzhalte ...
- CMS-401 - Erweiterung Java-Kompon ...
- CMS-410 - Bereitstellung CMS Beta ...
- CMS-413 - CMS Benachrichtigung in ...
- CMS-404 - Betriebs- und Installat ...
- CMS-646 - Anpassung StreamServe-K ...
- CMS-652 - StreamServe CMS Benachr ...
- CMS-424 - CMS Benachrichtigung au ...
- CMS-400 - Review Testfallspezifik ...
- CMS-399 - Erstellung Testfallspez ...
- CMS-396 - ASP: Feinoptimierung ...
- CMS-608 - Konsolidierung Java-Kom ...
- CMS-609 - Automatisierter Test DM ...
- CMS-325 - ASP: Aktualisierung fea ...
- CMS-406 - Review Testfallspezifik ...
- CMS-407 - Erweiterung Testfalpe ...
- CMS-406 - ASP: Feinoptimierung ...
- CMS-470 - Issue bei Openstat N ...
- CMS-409 - Entwicklerleit StreamSe

THE TEAM LEVEL LETS VISUALIZE METRICS in Pol ar ion



THE PROGRAM LEVEL

AN over view

PEOPLE

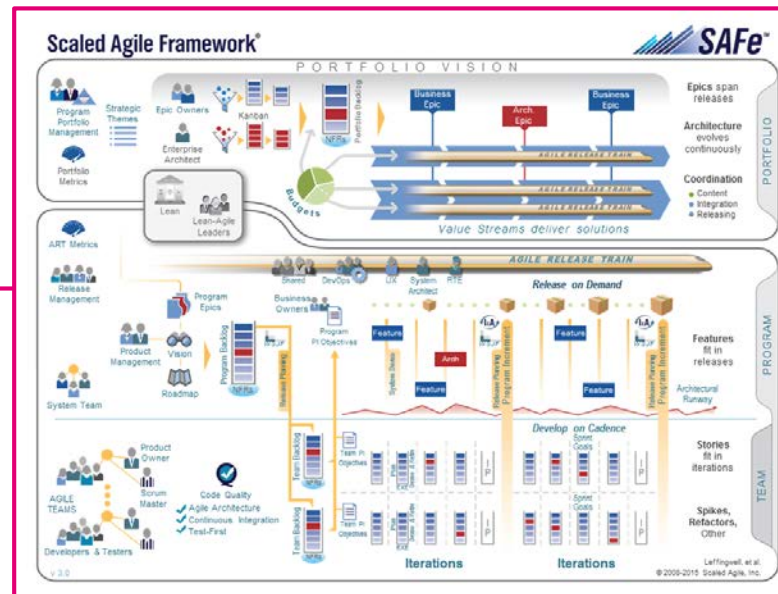
Release Management
 RTE
 Product Management
 System Team

Define program objectives
 Work on cadence with PI
 Release on demand
 Ensure quality
 Measure and visualize progress

ELEMENTS

Features
 Architecture Features
 Program Epics
 Program Increment
 Agile Release Train

Program backlog
 Roadmap
 ART metrics
 Feature status reports
 Story Burndown diagram

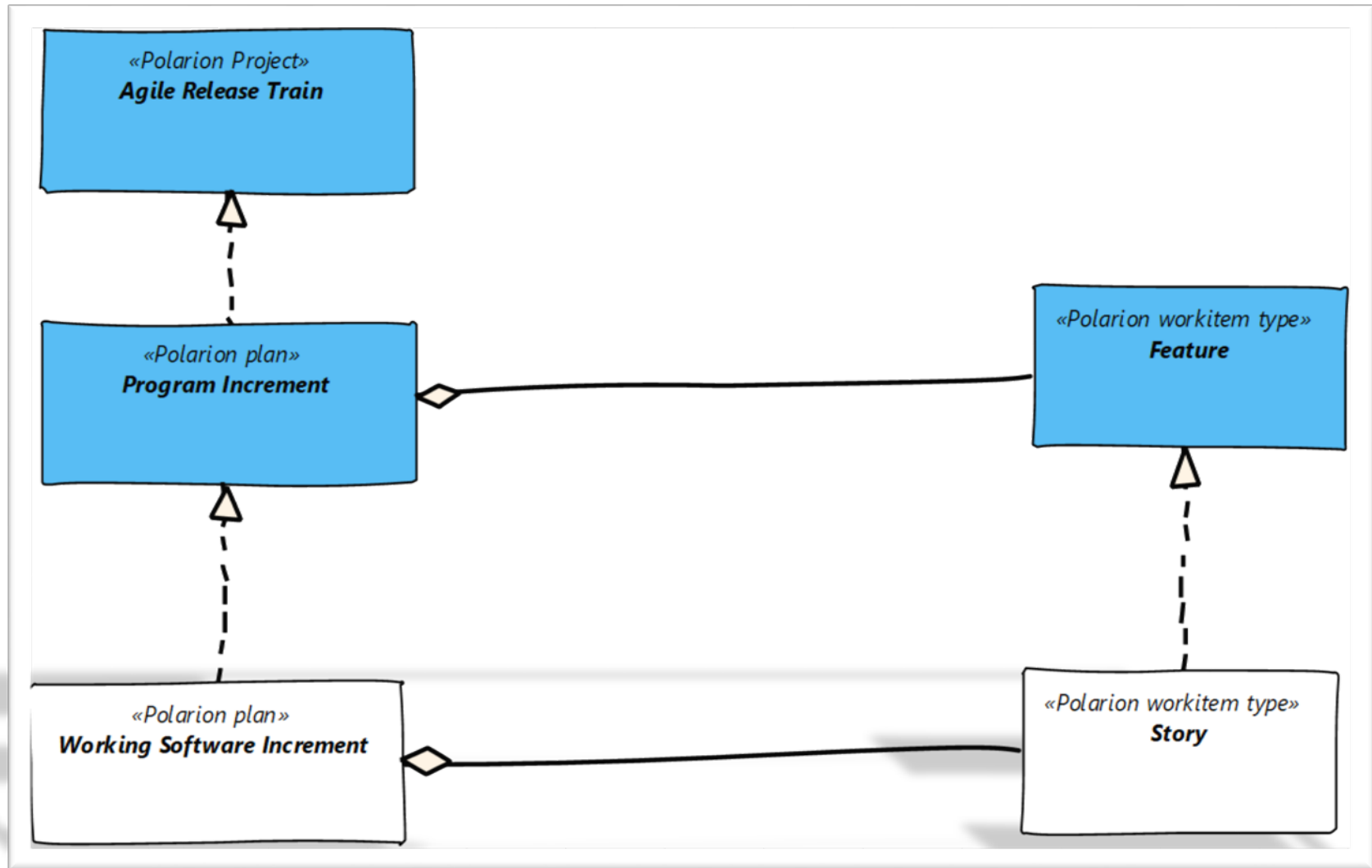


ACTIVITIES

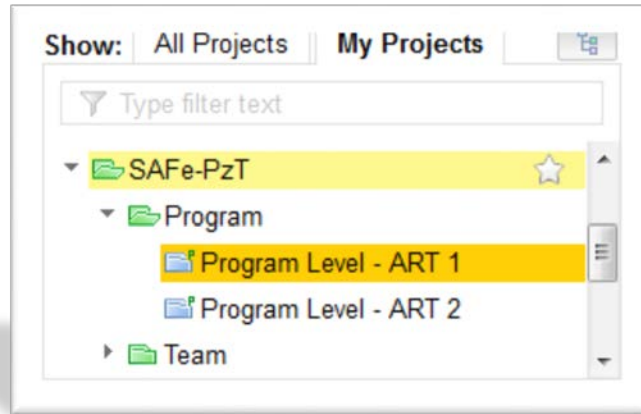
TOOLS AND METRICS

THE PROGRAM LEVEL

The theory behind WORKITEMS and RELATIONS



THE PROGRAM LEVEL WORKITEMS, PLANS and RELATIONS IN POLARION

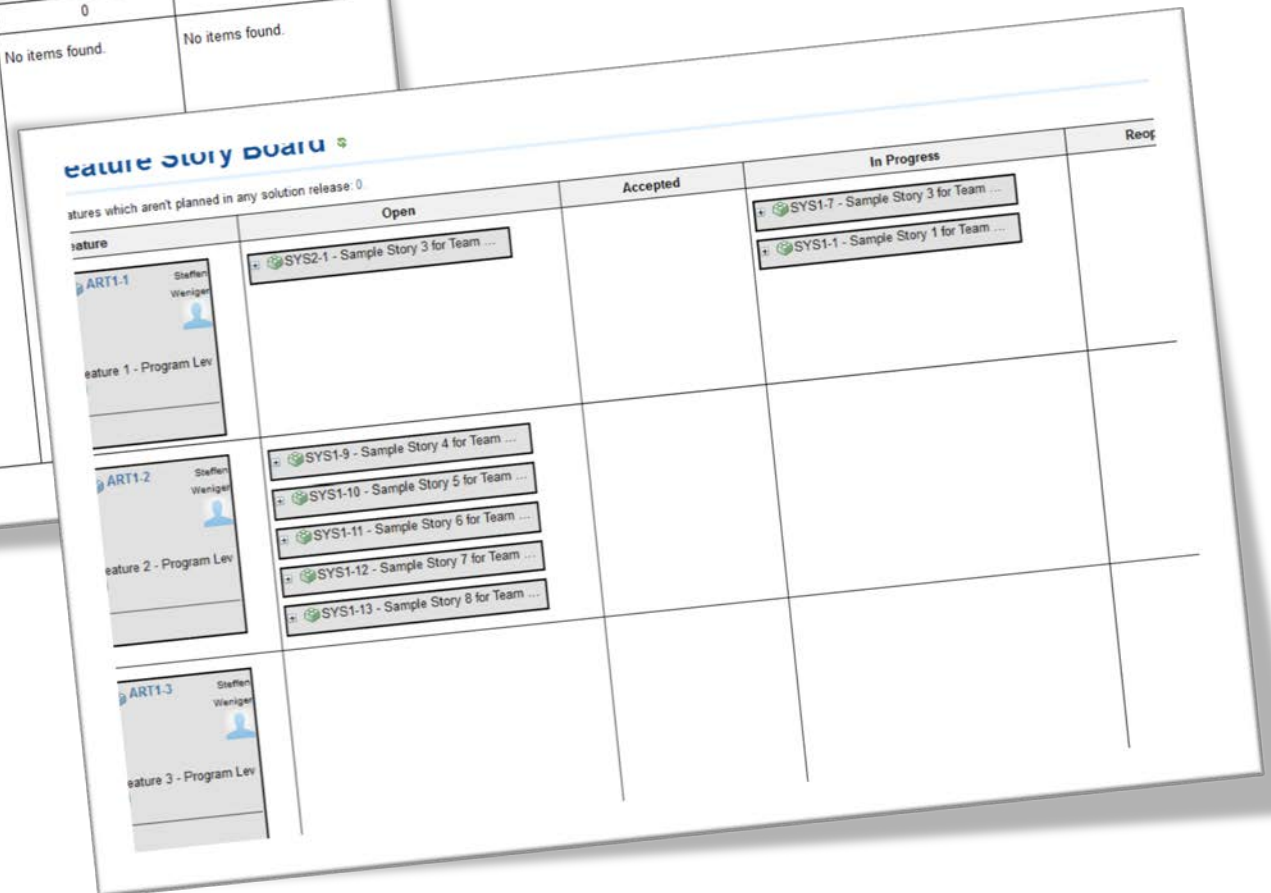
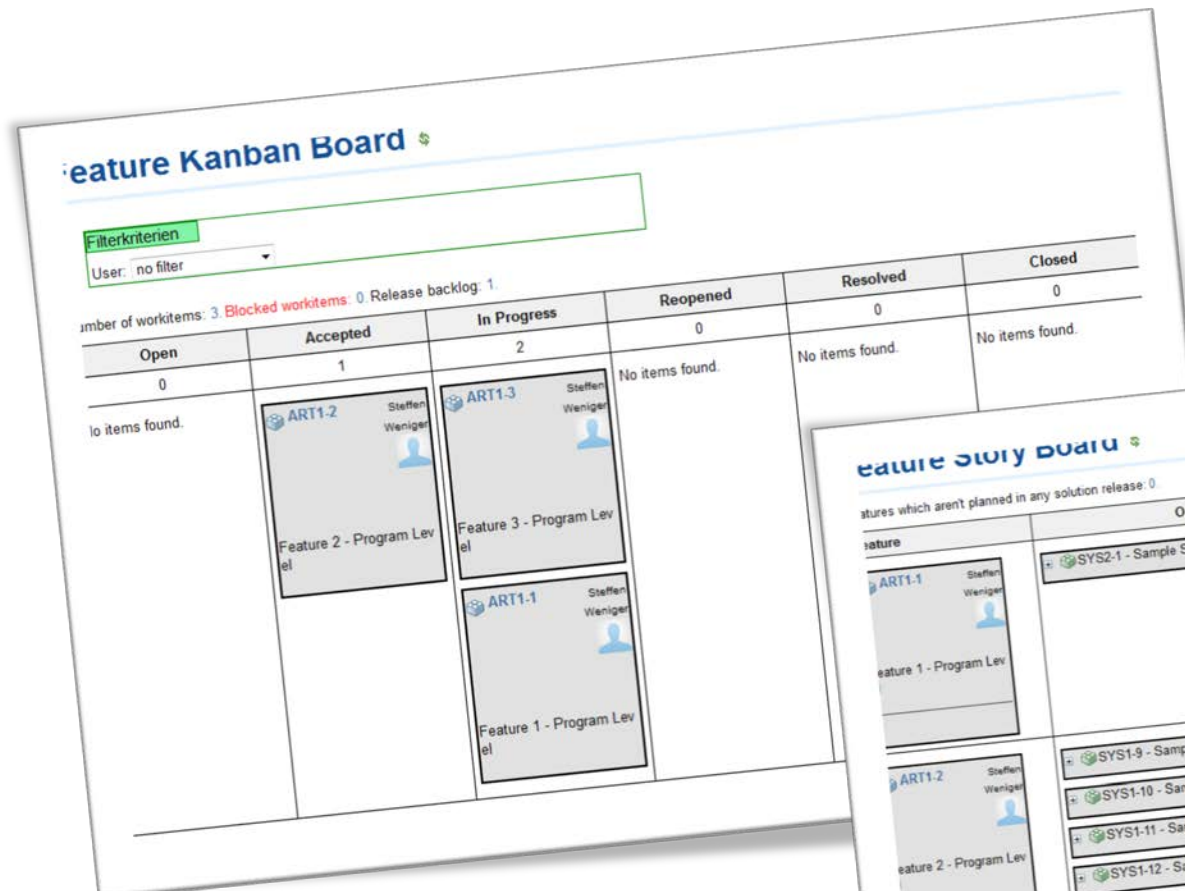


ID	Title	Planned In	Status
ART1-4	ART1 Features	ART1 (2016-12-31)	
ART1-1	Feature 1 - Program Level	ART1 PI1 (2015-10-13)	
SYS1-1	Sample Story 1 for Team System 1	System1 - WSI 1 (2015-10-13)	
SYS1-7	Sample Story 3 for Team System 1	System1 - WSI 1 (2015-10-13)	
SYS2-1	Sample Story 3 for Team System 2	System 2 - WSI 1 (2015-10-13)	
ART1-2	Feature 2 - Program Level	ART1 PI2 (2015-11-13)	
SYS1-9	Sample Story 4 for Team System 1		
SYS1-10	Sample Story 5 for Team System 1		
SYS1-11	Sample Story 6 for Team System 1		
SYS1-12	Sample Story 7 for Team System 1		
SYS1-13	Sample Story 8 for Team System 1		
ART1-3	Feature 3 - Program Level	ART1 PI1 (2015-10-13)	

Below the table, there is a toolbar with 'Edit', 'Save', and 'Cancel' buttons. A summary bar shows: PORT-1 ART1-4 + ART1-1 - Feature 1 - Program Level SYS1-1 SYS1-7 SYS2-1 +

Name	Status	Progress
ART1 (2016-12-31)		
ART1 PI1 (2015-10-13)		
ART1 PI2 (2015-11-13)		
ART1 PI3 (2015-12-15)		

THE PROGRAM LEVEL LETS VISUALIZE THE WORK in PoI ar ion



THE PROGRAM LEVEL LETS VISUALIZE THE Planning in Polarion

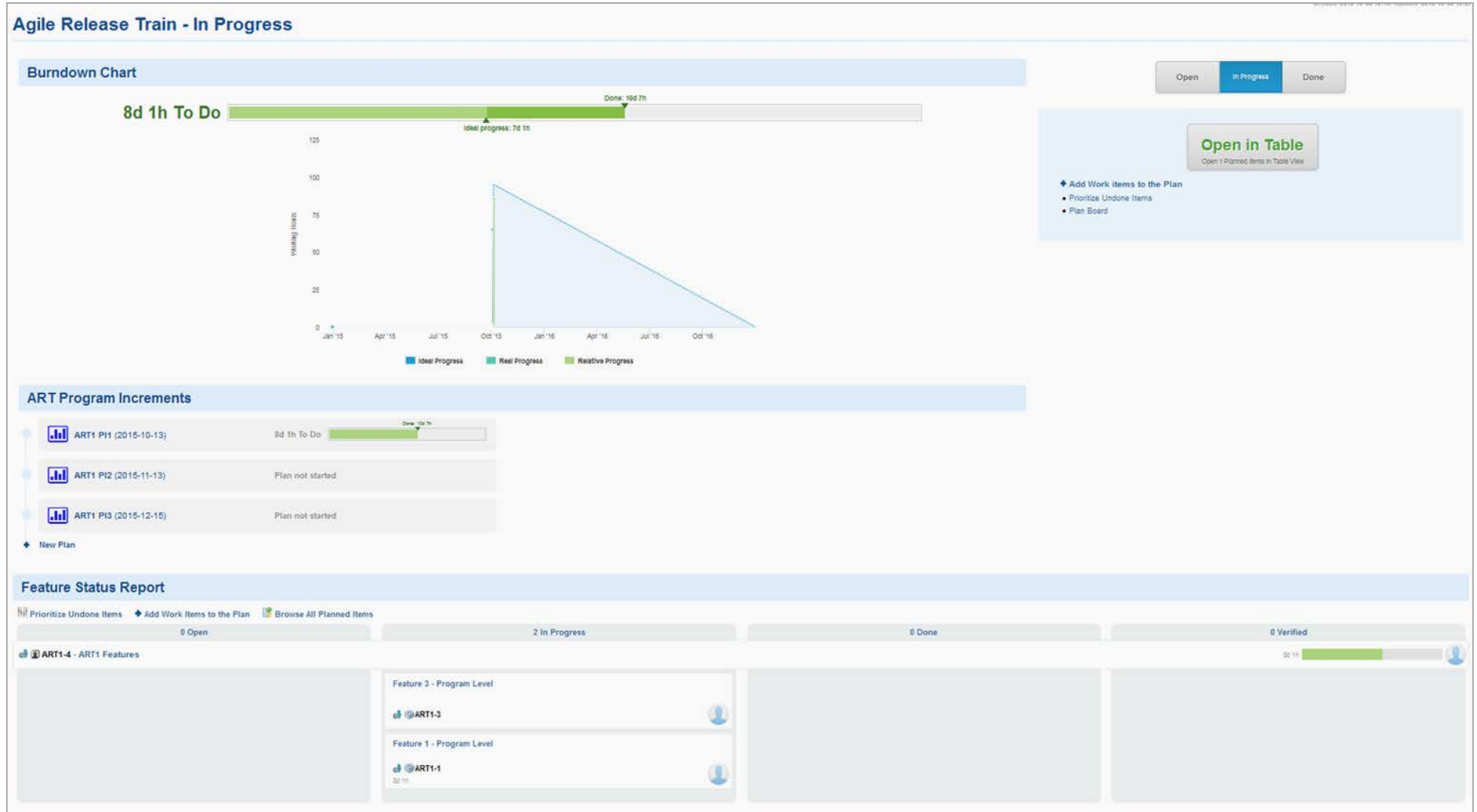
Feature Roadmap

HELP

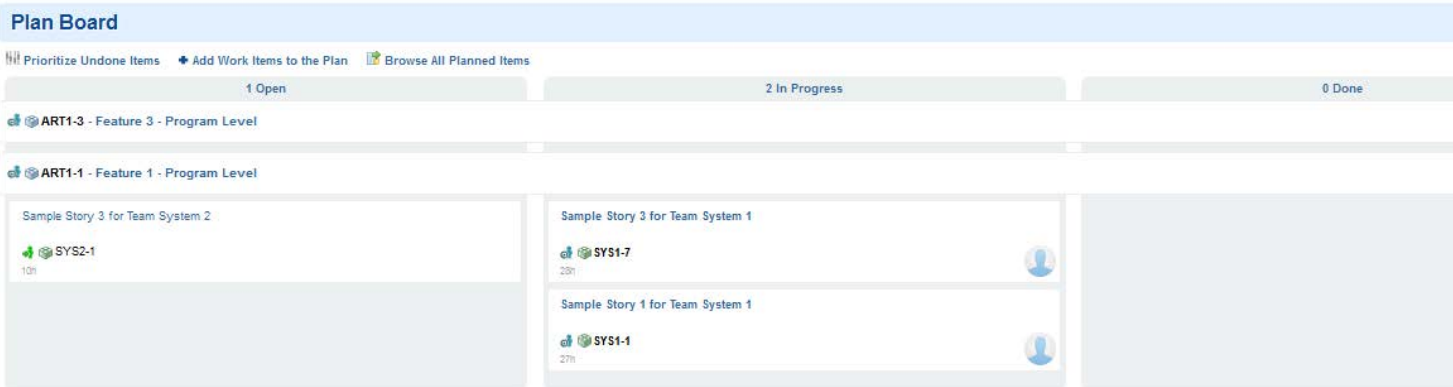
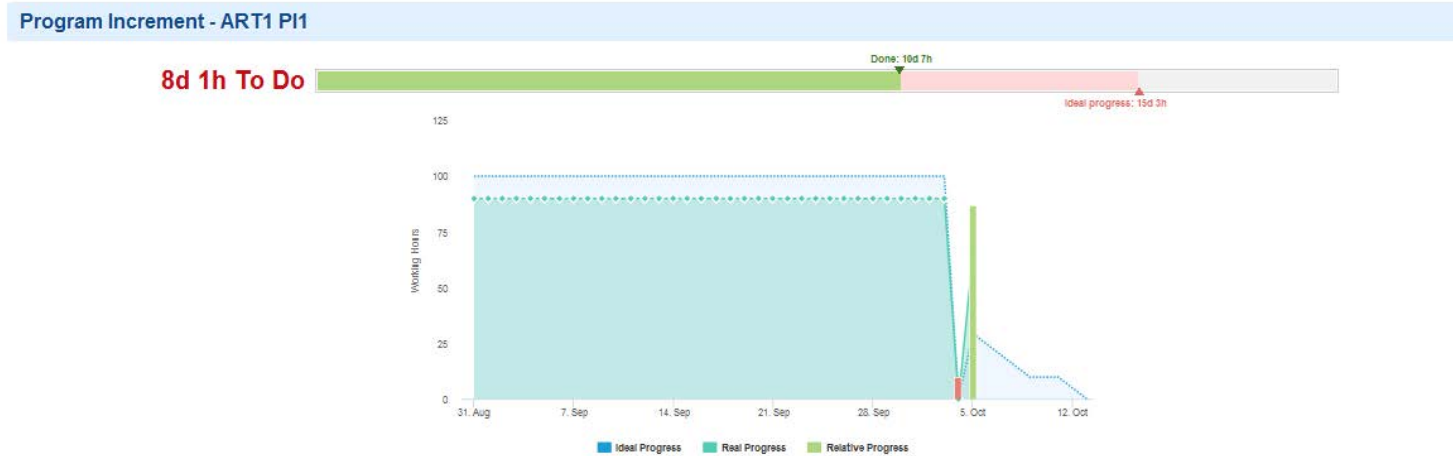
ART PI: no filter User: no filter Textsuche: Zettel aufklappen Apply

Status	ART1 P11 2015-09-01 - 2015-10-13					ART1 P12 keine Angabe - 2015-11-13					ART1 P13 keine Angabe - 2015-12-15				
	Pla	Ini	Act	Rem	Anz	Pla	Ini	Act	Rem	Anz	Pla	Ini	Act	Rem	Anz
	0	148	152	65	2	0	0	0	0	1	0	0	0	0	0
Open															
Accepted	<div style="border: 1px solid black; padding: 5px; width: fit-content; margin: 0 auto;"> ART1.2 Feature 2 - Program Level </div>														
In Progress	<div style="display: flex; justify-content: space-around; align-items: center;"> <div style="border: 1px solid black; padding: 5px; width: 40%;"> ART1.3 Feature 3 - Program Level </div> <div style="border: 1px solid black; padding: 5px; width: 40%;"> ART1.1 Feature 1 - Program Level </div> </div>														
Reopened															
Resolved															
Closed															

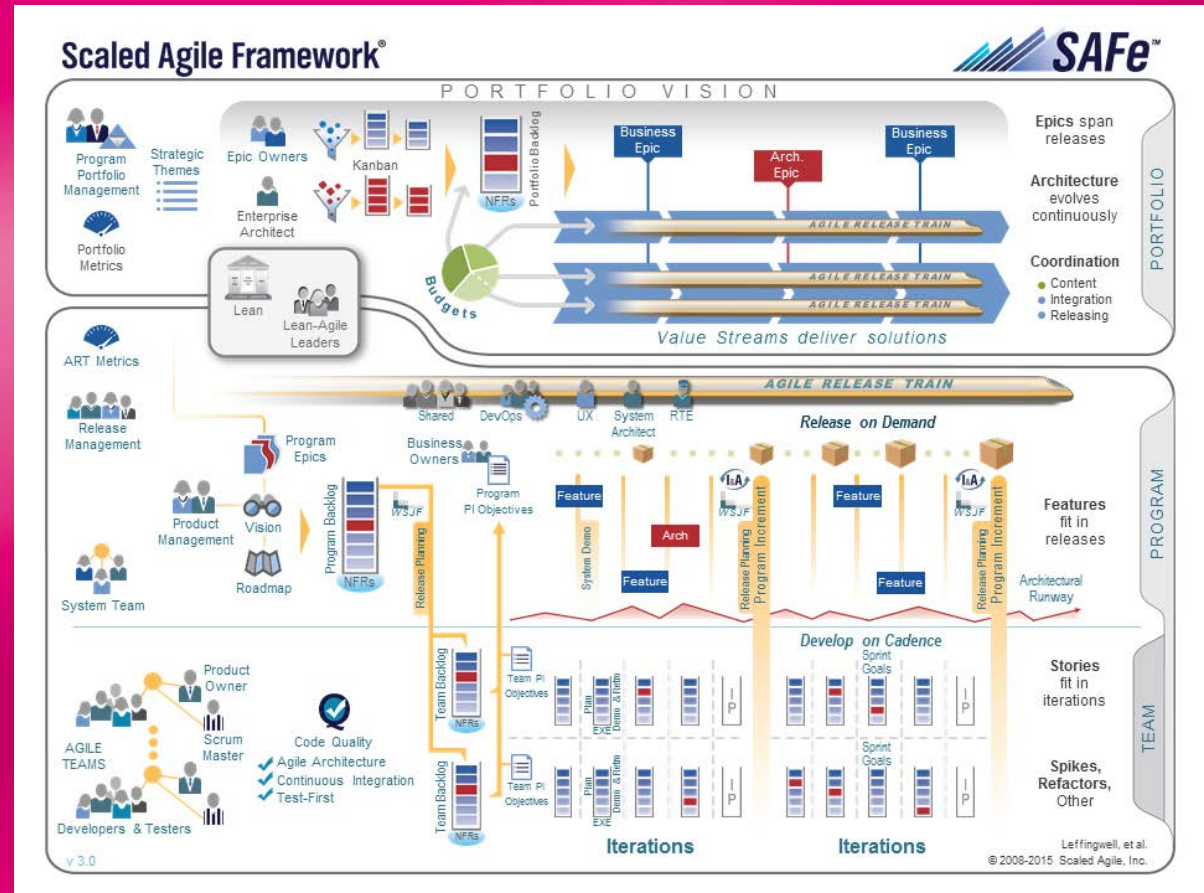
THE PROGRAM LEVEL LETS VISUALIZE METRICS in Pol ar ion (1/2)



THE PROGRAM LEVEL LETS VISUALIZE METRICS in PoI ar ion (2/2)



The PORTFOLIO Level



THE PORTFOLIO LEVEL AN over view

PEOPLE

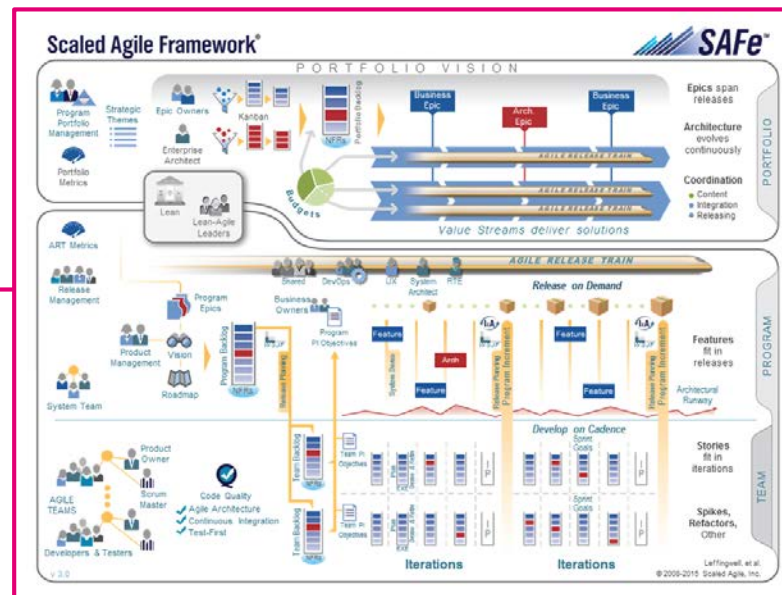
Epic Owners
Enterprise Architect
Program Portfolio Management

Align business strategy
along value steam lines
Deliver input to portfolio and
program backlog
Measure and visualize progress

ELEMENTS

Strategic Themes
Business Epics
Architectural Epics
Value Stream

Kanban Systems
Portfolio backlog
Portfolio Kanban Board
Epic Burn-Up Chart
Epic progress reports

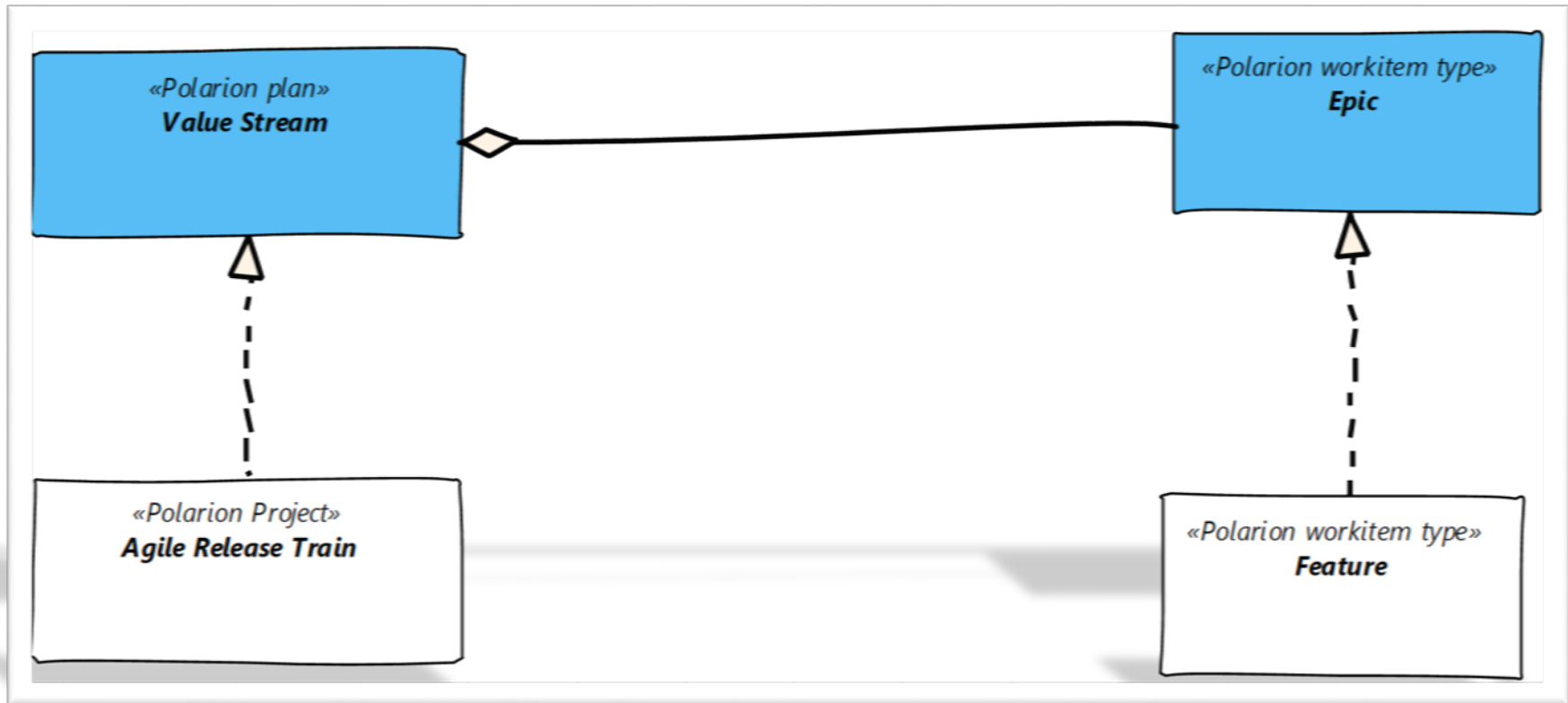


ACTIVITIES

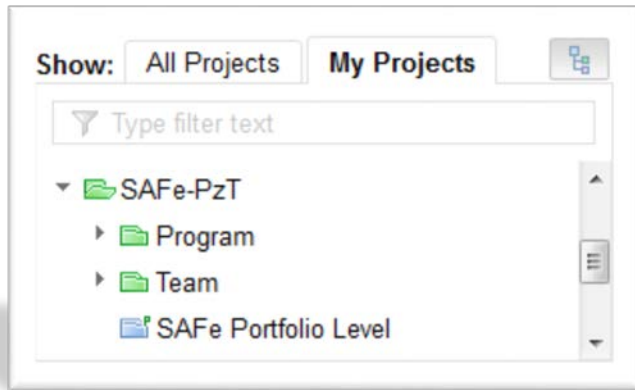
TOOLS AND METRICS

THE PORTFOLIO LEVEL

The theory behind WORKITEMS and RELATIONS




THE PORTFOLIO LEVEL WORKITEMS, PLANS and RELATIONS IN POLARION



ID	Title	Planned In	Status
PORT-1	Sample Epic 1 - Portfolio Level	Sample Value Stream 1 (2016-09-28)	
ART2-1	Feature (2) - Program Level	ART2 PI3	
ART1-1	Feature 1 - Program Level	ART1 PI1 (2015-10-13)	
ART1-2	Feature 2 - Program Level	ART1 PI2 (2015-11-13)	
ART1-3	Feature 3 - Program Level	ART1 PI1 (2015-10-13)	
PORT-2	Sample Epic 2 - Portfolio Level	Sample Value Stream 1 (2016-09-28)	
PORT-3	Sample Epic 3 - Portfolio Level		
PORT-4	Sample Epic 4 - Portfolio Level		
PORT-5	Sample Epic 5 - Portfolio Level		
PORT-6	Sample Epic 6 - Portfolio Level	Sample Value Stream 2	
<input checked="" type="checkbox"/> PORT-7	Sample Epic 7 - Portfolio Level	Sample Value Stream 1 (2016-09-28)	

Name	Status	Progress
Value Streams		
<input checked="" type="checkbox"/> Sample Value Stream 1 (2016-09-28)		<div style="width: 50%; background-color: green;"></div>
Sample Value Stream 2		

THE PORTFOLIO LEVEL LETS VISUALIZE THE WORK in Polarion



SAFe Portfolio Level

Steffen Weniger
My Polarion

Home

Portfolio Kanban Board

Work Items

Documents & Wiki

Default Space

Boards

Index

Portfolio Kanban Board

Macros

Expand

Portfolio Kanban Board

Filterkriterien

User: no filter

Number of workitems: 7. Blocked workitems: 0. Release backlog: 0.

Funnel	Do Review	Do Analysis	Ready for Implementation	Do Implementation	Rejected	Done
3	1	0	2	1	0	0
<p>PORT-3</p> <p>Epic (2) - Portfolio Level</p>	<p>PORT-5</p> <p>Epic (2) - Portfolio Level</p>	No items found.	<p>PORT-2</p> <p>Epic (2) - Portfolio Level</p>	<p>PORT-1</p> <p>Epic (1) - Portfolio Level</p> <p>Steffen Weniger</p>	No items found.	No items found.
<p>PORT-7</p> <p>Sample Epic 7</p>			<p>PORT-6</p> <p>Epic (2) - Portfolio Level</p>			
<p>PORT-4</p> <p>Epic (2) - Portfolio Level</p>						

THE PORTFOLIO LEVEL LETS VISUALIZE THE Planning in Polarion

Unresolved x + 7 found

Show Backlinked Work Items having Any role expanded to 0 levels Include Commits Filter Linked Items

ID	Title	Planned In	Status
<input checked="" type="checkbox"/> PORT-4	Sample Epic 4 - Portfolio Level		
<input type="checkbox"/> PORT-3	Sample Epic 3 - Portfolio Level		
<input type="checkbox"/> PORT-5	Sample Epic 5 - Portfolio Level		
<input type="checkbox"/> PORT-7	Sample Epic 7 - Portfolio Level	Sample Value Stream 1 (2016-09-28)	
<input type="checkbox"/> PORT-6	Sample Epic 6 - Portfolio Level	Sample Value Stream 2	
<input type="checkbox"/> PORT-2	Sample Epic 2 - Portfolio Level	Sample Value Stream 1 (2016-09-28)	
<input type="checkbox"/> PORT-1	Sample Epic 1 - Portfolio Level	Sample Value Stream 1 (2016-09-28)	

Planning

Sample Value Stre...

ID: Sample_Value_Stream_2

1 Item(s) | 0 Planned | 0 Unplanned

Prioritize Items

1 item(s) selected

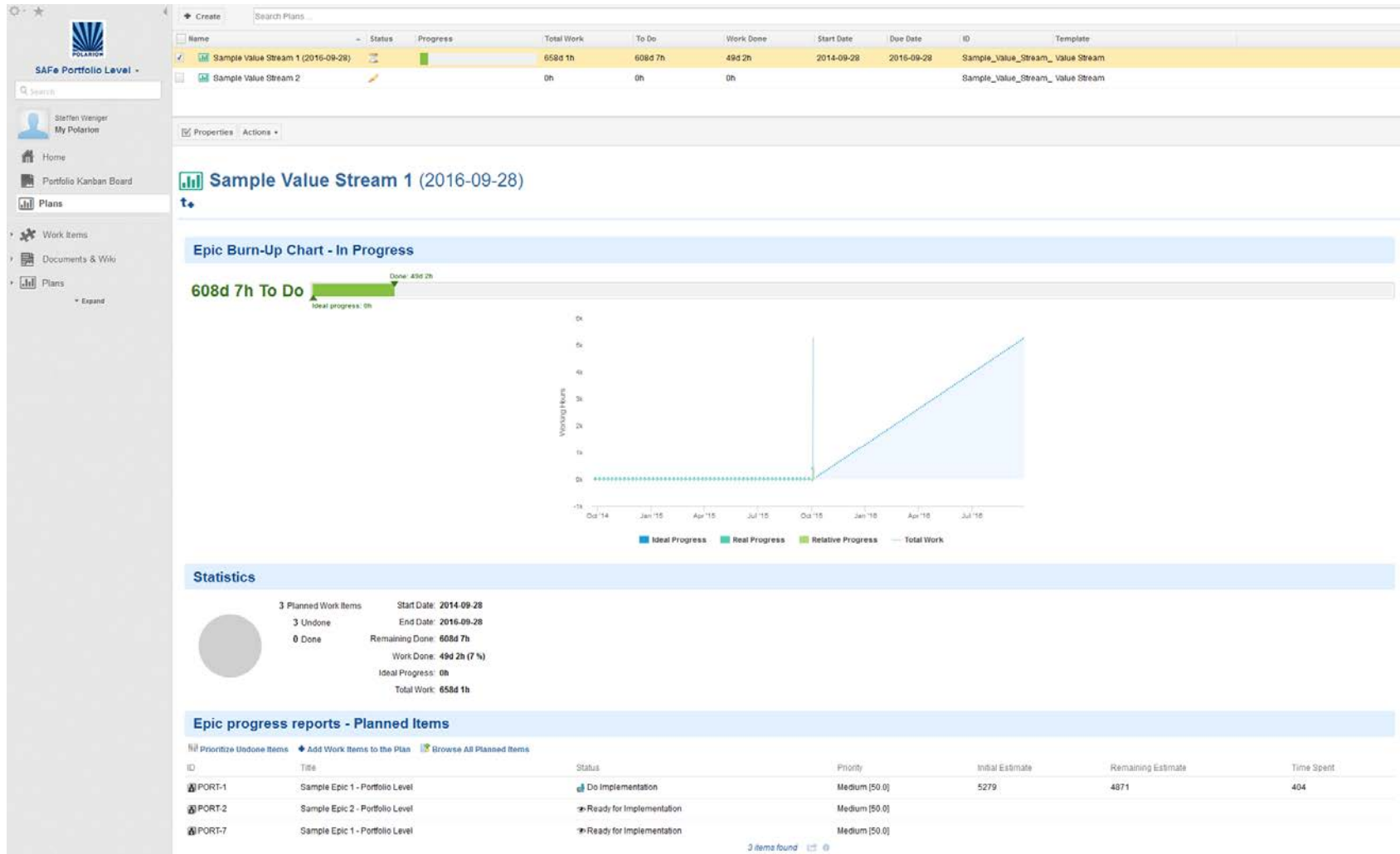
+ Add
1 item(s) to Plan

- Remove
0 item(s) from Plan

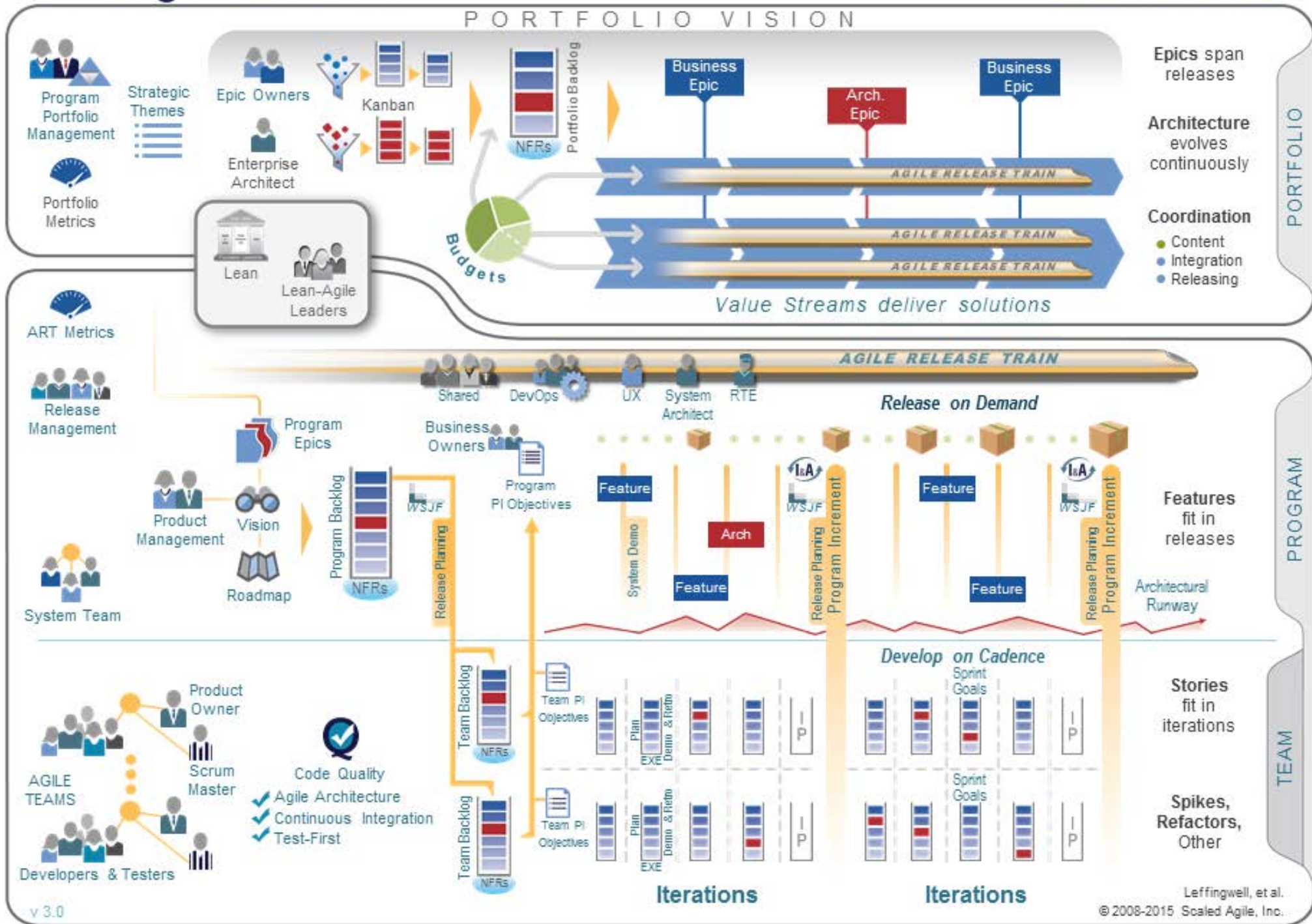
Open Plans

- Value Streams
 - Sample Value Stream 2
 - Sample Value Stream 1 ...

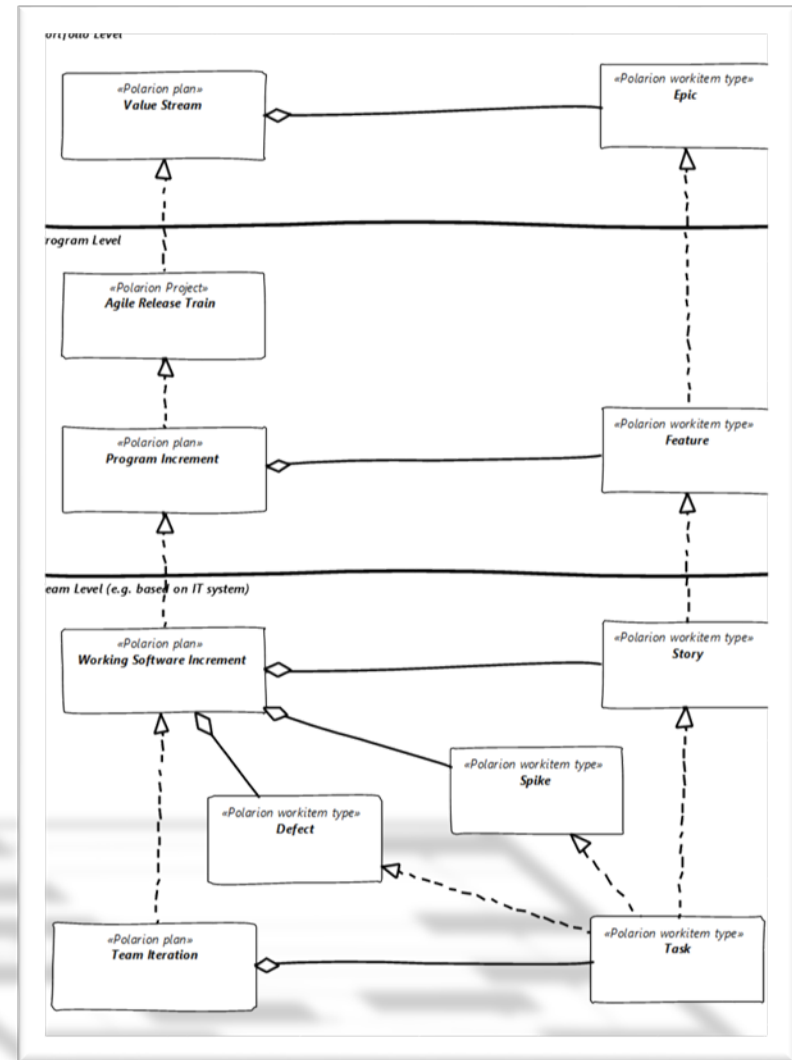
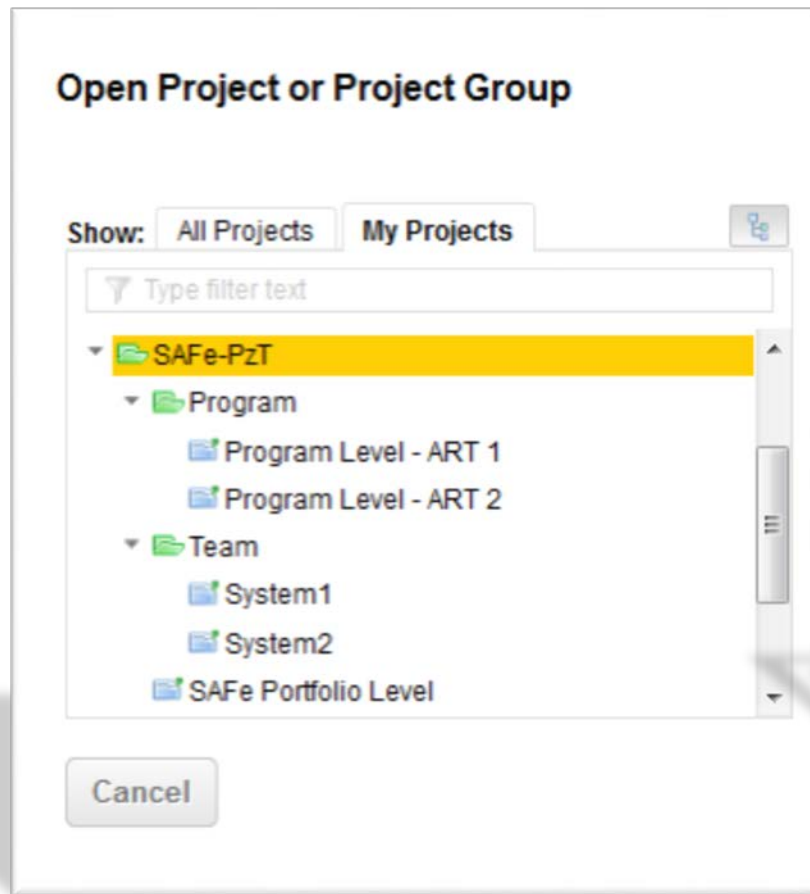
THE PORTFOLIO LEVEL LETS VISUALIZE METRICS in Polarion



Scaled Agile Framework®



THE BIG PICTURE AGAIN WORKITEMS, PLANS and RELATIONS IN POLARION



THE BIG PICTURE AGAIN

WALK THROUGH ALL LAYERS IN POLARION

ID	Title	Planned In	Status	Priority	Initial Estimate	Remaining Es
PORT-7	Sample Epic 7 - Portfolio Level	Sample Value Stream 1 (2016-09-28)		50.0		
PORT-6	Sample Epic 6 - Portfolio Level	Sample Value Stream 2		50.0		
PORT-5	Sample Epic 5 - Portfolio Level			50.0		
PORT-4	Sample Epic 4 - Portfolio Level			50.0		
PORT-3	Sample Epic 3 - Portfolio Level			50.0		
PORT-2	Sample Epic 2 - Portfolio Level	Sample Value Stream 1 (2016-09-28)		50.0		
PORT-1	Sample Epic 1 - Portfolio Level	Sample Value Stream 1 (2016-09-28)		50.0	148	65
ART2-1	Feature (2) - Program Level	ART2 PI3		50.0		
SYS2-2	Story (4) - Team Level	Sys-Rel 2 (2015-09-01)		50.0		
SYS1-2	Story (2) - Team Level	System1 - WSI 2 (2016-02-08)		50.0	17	2
SYS1-3	Sample Task 3	Iteration-1		50.0	17	2
ART1-3	Feature 3 - Program Level	ART1 PI1 (2015-10-13)		50.0		
ART1-2	Feature 2 - Program Level	ART1 PI2 (2015-11-13)		50.0		
ART1-1	Feature 1 - Program Level	ART1 PI1		50.0	148	65
SYS2-1	Sample Story 3 for Team System 2	System 2 - WSI 1		50.0	10	10
SYS1-7	Sample Story 3 for Team System 1	System1 - WSI 1		50.0	42	28
SYS1-1	Sample Story 1 for Team System 1	System1 - WSI 1		50.0	96	27
SYS1-6	Sample Task 4 for Team System 1	Iteration 2		50.0	48	27
SYS1-5	Sample Task 2 for Team System 1	Iteration-1		50.0	32	
SYS1-4	Sample Task 1 for Team System 1	Iteration 2		50.0	16	

T · Systems ·

THE BIG PICTURE AGAIN

SCALED AGILE Framework with Polarion

The image displays a comprehensive view of the Scaled Agile Framework (SAFe) implemented using Polarion. The central diagram, titled 'Scaled Agile Framework', illustrates the multi-level structure:

- Portfolio Vision:** Focuses on Business Epics, Architecture Epics, and Business Epics. It shows 'Value Streams' and 'Release Trains' moving from left to right. Key roles include Epic Owners and Enterprise Architects.
- Program:** Features 'Release on Demand' and 'Architectural Runway'. It shows 'Program PI Objectives' and 'Features' being developed. Roles include Product Owners and System Architects.
- Team:** Involves 'Develop on Cadence' and 'Stories fit in iterations'. It shows 'Sprints' and 'Spikes, Refactors, Other' activities. Roles include Product Owners and Developers & Testers.

Surrounding the central diagram are several screenshots from the Polarion software interface:

- Engineering Board:** A Kanban board showing 254 items 'To Do'.
- Release Roadmap:** A Gantt-style chart showing release schedules for various components.
- Iteration Planning:** A table for planning current and upcoming iterations, including status indicators like '254 To Do'.
- Portfolio Kanban Board:** A high-level Kanban board for portfolio items.
- Feature Roadmap:** A detailed roadmap for specific features.
- Agile Release Train in Progress:** A chart showing the progress of an agile release train.
- Release Train in Progress:** A detailed view of the release train's progress.

QuestionS?

THANK YOU!

Steffen Weniger

Project Leader, PMP, PMI-ACP, SAFe Agilist

T-Systems International GmbH

Telekom IT

Andreasstraße 38a

99084 Erfurt

Tel.: +49 361-6514-229

Mobil: +49 160-8891-580

E-Mail: steffen.weniger@t-systems.com

Web: https://www.xing.com/profile/Steffen_Weniger

Legal notice

The Scaled Agile Framework® and SAFe® are registered marks of Scaled Agile, Inc. and are protected by U.S. and International copyright laws. The Big Picture of SAFe® was reproduced with permission © 2011-2015 Scaled Agile, Inc. All rights reserved. Please visit <http://www.scaledagile.com> or <http://www.scaledagileframework.com> for more information. The used Big Picture was downloaded from <http://www.scaledagileframework.com/downloads/>.