

Polarion User Event Enterprise Architect 11 and more

Peter Lieber, SparxSystems



SPARX
SYSTEMS
Central Europe

© Sparx Systems Software GmbH
Central Europe

Sparx Systems Central Europe Portfolio

- Enterprise Architect
- (auch) Deutschsprachiger Support
- Premium Support Verträge
- Deutschsprachiges Trainingshandbuch
- Trainings und Consulting für Enterprise Architect
- In der Forschung (u.a. EU) aktiv (Schwerpunkt: Modellierung)

www.sparxsystems.eu

Global Partner Support Network



Diverse Global Deployment Spectrum

FINANCE

CitiGroup
Wells Fargo
Bank of America
JPMorgan Chase
National Australia Bank
Royal Bank of Canada
Royal Bank of Scotland
Reserve Bank of NZ

INSURANCE

Skandia,
PMI,
Zurich,
First
American,
Fidelity National

TELECOM

Vodafone
T-Mobile
China Mobile
Motorola,
Orange
AT&T
Verizon
NTT DoCoMo

AUTOMOTIVE

Toyota
Mitsubishi
BMW
TRW
General Motors
Chrysler
Daimler Mercedes
Volkswagen

Aer'spce & Def

BAE Systems
Smith's Aerospace
Lockheed Martin
BOEING
General Dynamics
EADS
Northrup Grumman
Thales
Rolls Royce
Bombardier

UTILITIES

Duke Energy
Scottish Power
Origin Energy
Sierra Pacific
Edison International
Southern California Edison
Exelon Corp
ComEd
Pico Energy

ELECTRONICS

Nintendo
LG Electronics
Konica Minolta
Sony
Panasonic
Sharp
Olympus
Nikon

MEDIA

Walt Disney
Time Warner
Comcast
Tribune
SES Global

TECHNOLOGY

Hewlett Packard
Honeywell,
Microsoft
Canon,
IBM
Toshiba
ORACLE
SAP

BIOTECH

Pfizer
Novartis
Sanofi-aventis
Roche Holdings
Abbott Laboratories
AstraZeneca
GlaxoSmithKline
Merck & Co
Eli Lilly & Co
Teva Pharmaceutical Ind
Amgen

RETAIL

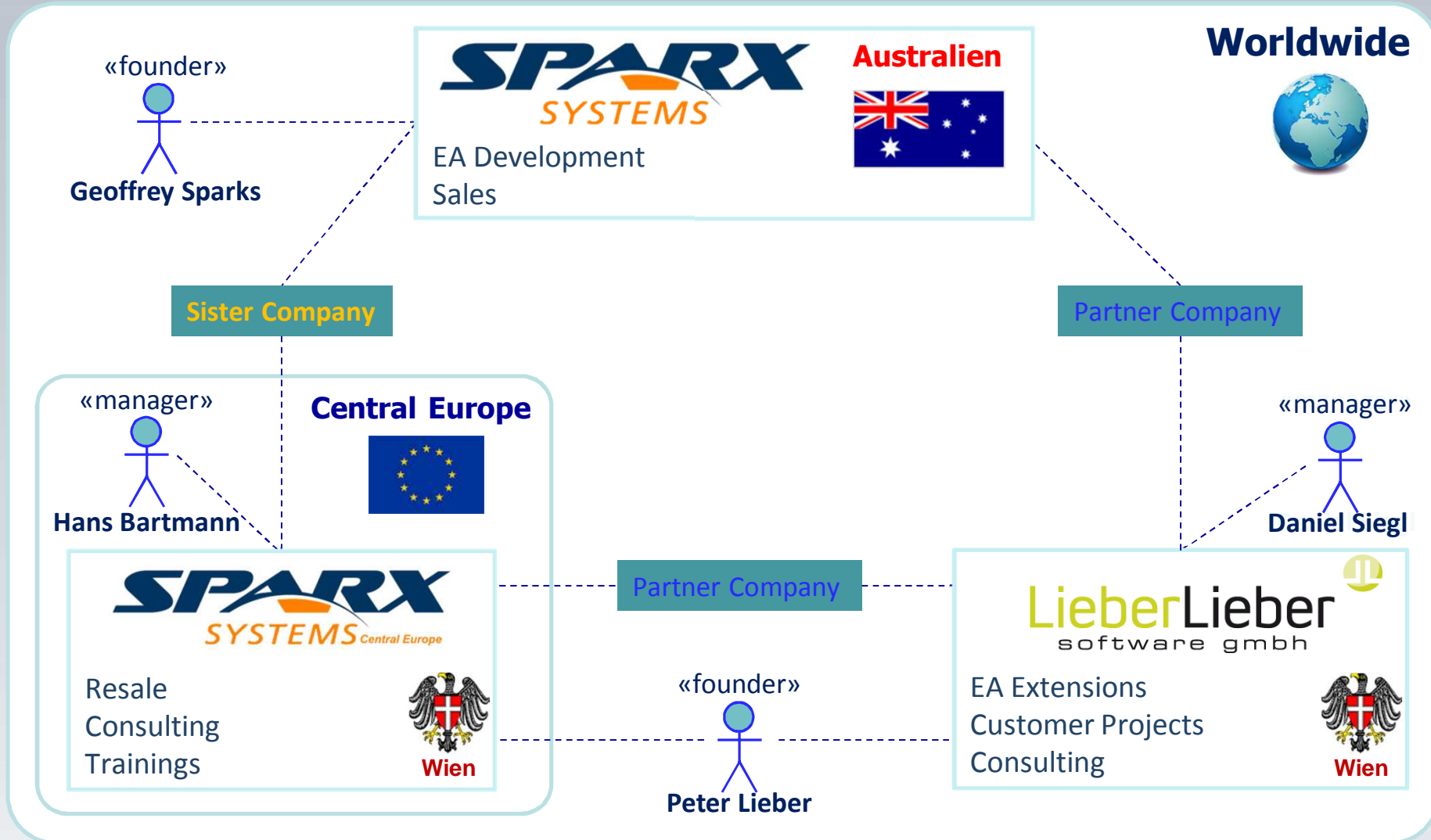
Wal-Mart
Kroger
Target
Walgreen
The Home Depot
Costco
CVS Caremark
Best Buy
Safeway
SUPERVALUE

GOVERNMENT

Canada
United States,
Australia
Europe
India
United Kingdom
Colombia
Sweden

www.sparxsystems.eu

How do we work together



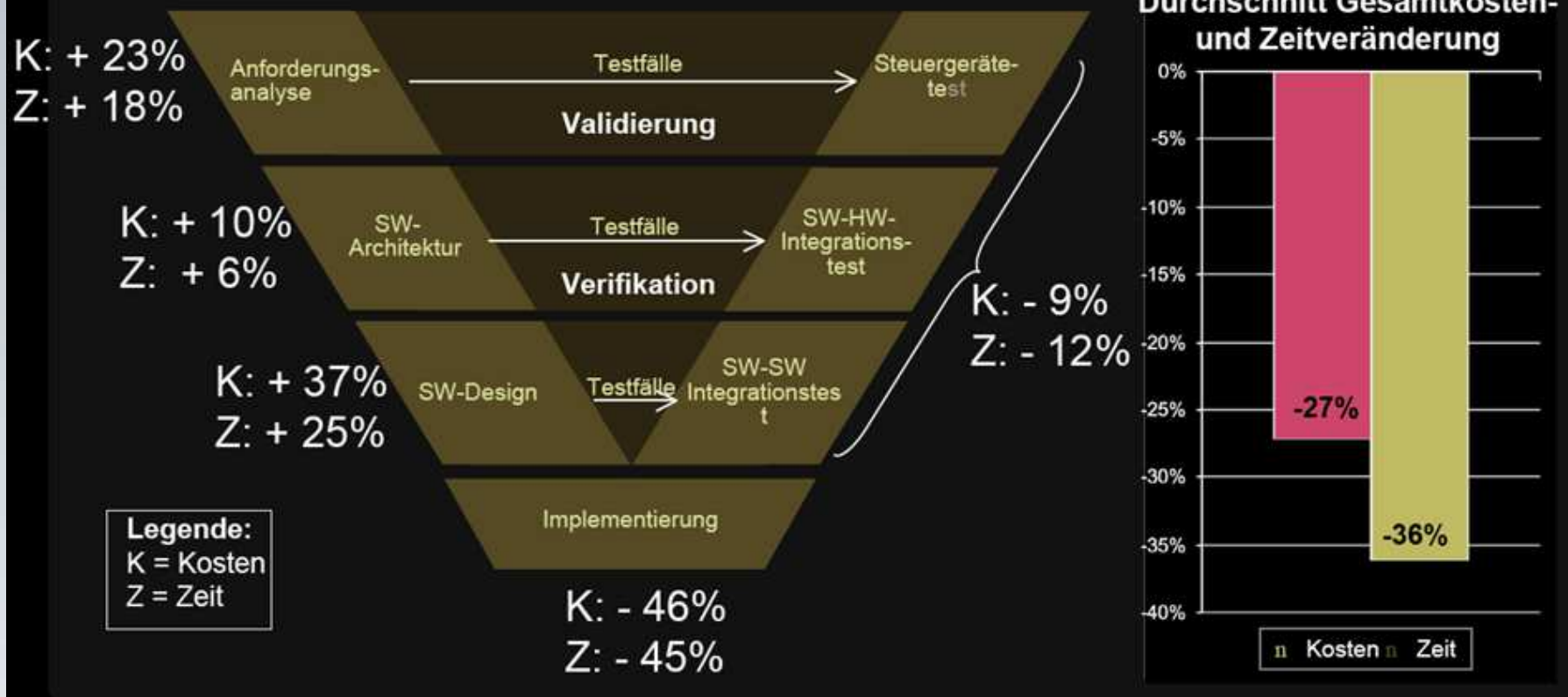
Enterprise Architect Management View

Peter Lieber



Modellbasiertes Softwareengineering

Kosten- und Zeitveränderungen durch die modellbasierte Softwareentwicklung entlang der einzelnen Entwicklungsphasen und in Gesamtsicht



Broy: Modellbasierte Entwicklung - Trends aus der Forschung

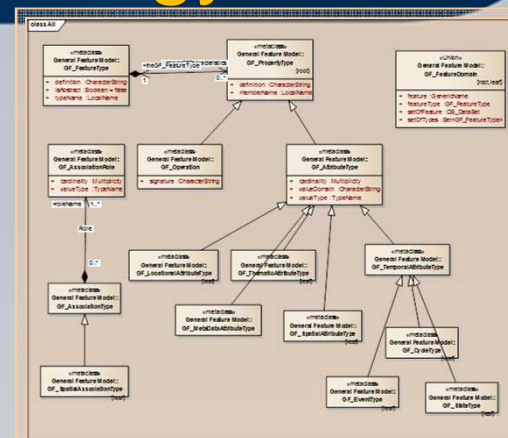
12

www.sparxsystems.eu

Quality / Application of Technology

■ Standards and Standard Bodies

- Smart Grid (IEC TC57, CIM)
- E-Health (EHR,CDA,BRIDG, ISO 215)
- Geospatial (ISO/TC 211, CEN/TC 287, OGC)
- Retail (ARTS UnifiedPOS)
- Government (eDAIS)
- Automotive (AUTOSAR)
- Intelligent Transport Systems (DATEX II)
- Social Security (Medicaid InformationTechnology Architecture – MITA)
- E-Commerce (OASIS Unified Business Language)
- Geology (GeoSciML, SoilML, WaterML)
- Biodiversity (European Distributed Institute of Taxonomy)
- Rail Transport (TRAX)
- EDI (ASC X12)
- Financial Services Messaging (SWIFT/SEPA)
- Ports (EFFORTS)
- Telecommunications (eTOM, eTAM, SID)
- Object Management Group (UML, XMI, DDS, MPMN, UPDM etc)
- NIEM
- ...



www.sparxsystems.eu

Quality / Application of Technology

- AIIA iAwards Victoria State Award Winner 2011, 2012
- SD Times 100 Award 2009, 2010, 2011, 2012
- Visual Studio Magazine Readers Choice Merit Award 2009, 2010
- Programmers Paradise Riding the Crest Award 2010
- MIS Financial Review, 2009 “Asian Rising Star” Recognition
- Jolt Productivity Awards 2006, 2008
- Consensus Software Quality Award 2005
- Features regularly in Gartner and Forester Reports



www.sparxsystems.eu

Enterprise Architect ist eine Plattform

Model Driven Generation (MDG) Technology

Metamodel

- Profiles
- Patterns
- Diagram Types
- Toolboxes
- Tagged Value Types
- Task pages
- Shape scripts

Transformation

- Code Generation Templates
- Model Transform. Templates

Reports

- RTF Templates
- Linked Document Templates

- Images
- Scripts
- Workspace Layouts
- Model Views
- Searches

Enterprise Architect

UML

SysML

BMNP

SYSMOD

AMUSE

etc.

MDG Technologies

Doors
Link

AMUSE

etc.

Add Ins

Diagram Editor

Project Browser

etc.

Code
Generators

Scripting
Engines

Document
Generators

Automation Interface

EA Data Model

EA DATA (eap, DB, XMI)

Enterprise Architect 11 Product View

Peter Lieber



SPARX
SYSTEMS
Central Europe

© Sparx Systems Software GmbH
Central Europe

EA 11 Official Highlights (1/2)

- Software Business Systems: Documentation, Graphs, and Reports
- Team Based Modeling: Communication and Security
- New / Enhanced Profiles: NIEM, GML, ArchiMate and more
- Enhanced UI: Team Review, Relationship Matrix, Element Browser
- New Deployment Options: Cloud, RAS, OSLC, Firebird

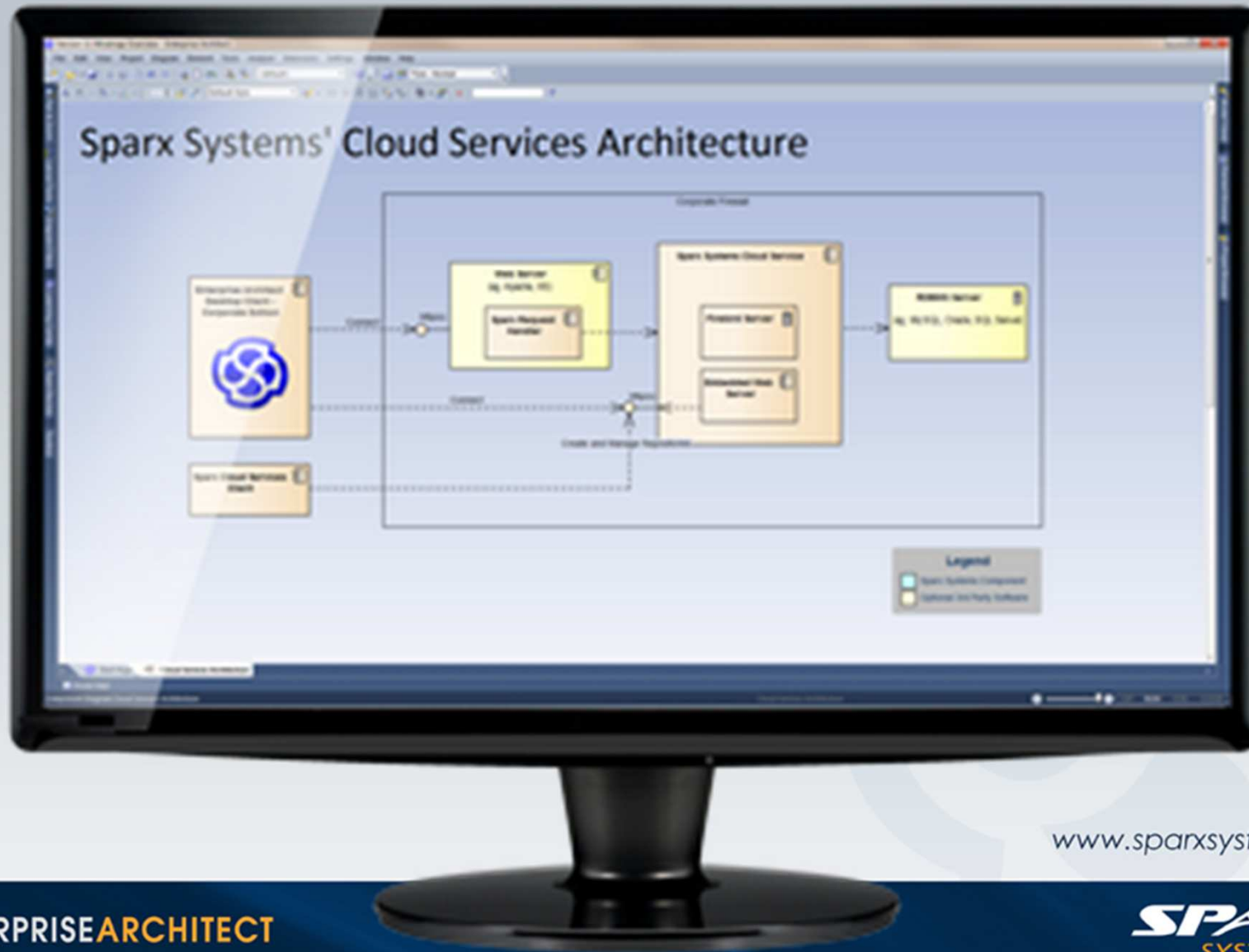
www.sparxsystems.eu

EA 11 Official Highlights (2/2)

- Diagramming: Tiles, Transparencies, Themes, & Storage
- Coding and Scripting: Profiling, Grammars, & Roundtripping
- Simulation: Objects, Actions, Parameters, & API
- Execution Analysis: Function Line Reports, 64-bit, and more
- ...

www.sparxsystems.eu

EA 11 Cloud Services



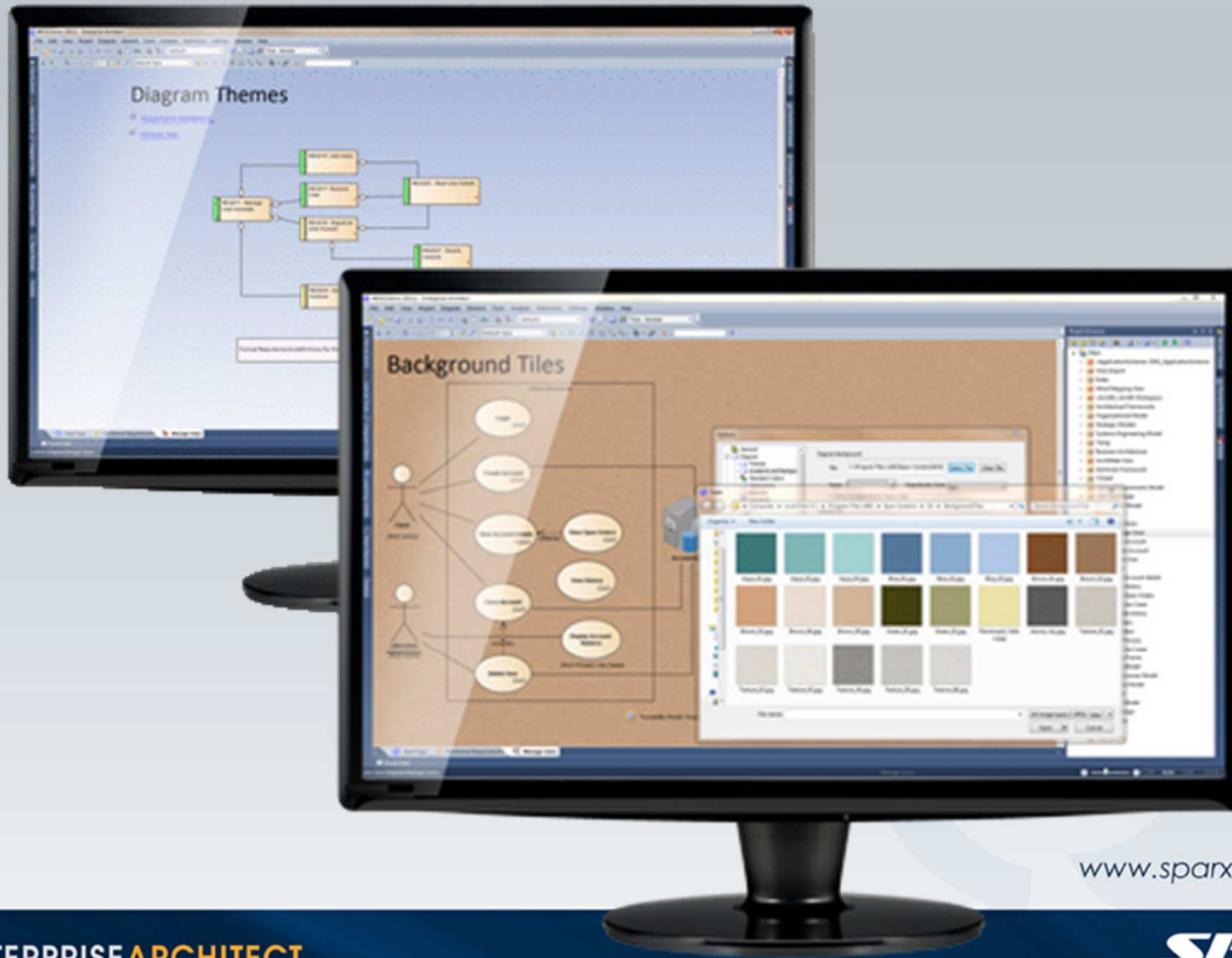
www.sparxsystems.eu

EA 11 and Firebird



www.sparxsystems.eu

EA 11 Diagram Themes / Tiles



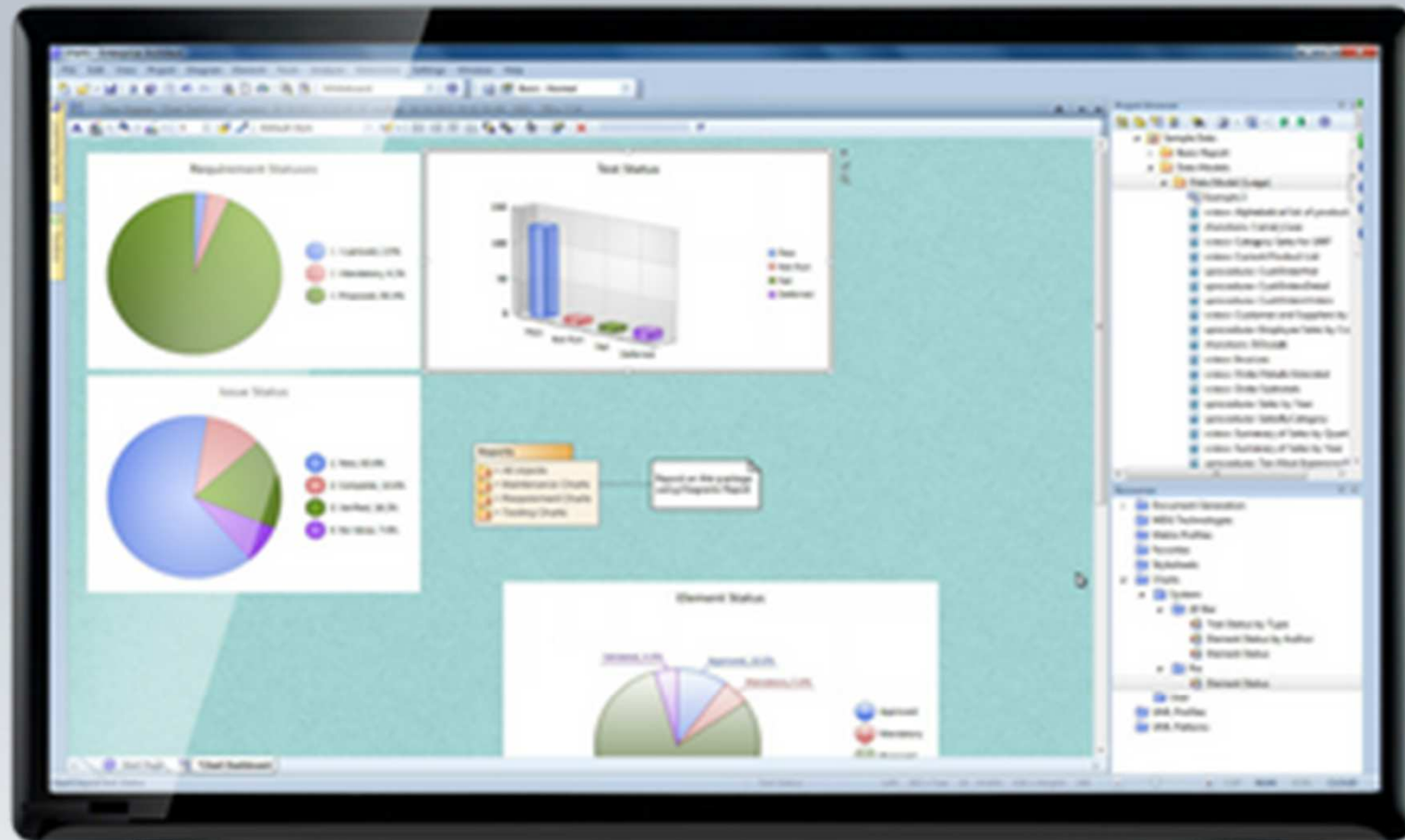
www.sparxsystems.eu

EA 11 Document Generation



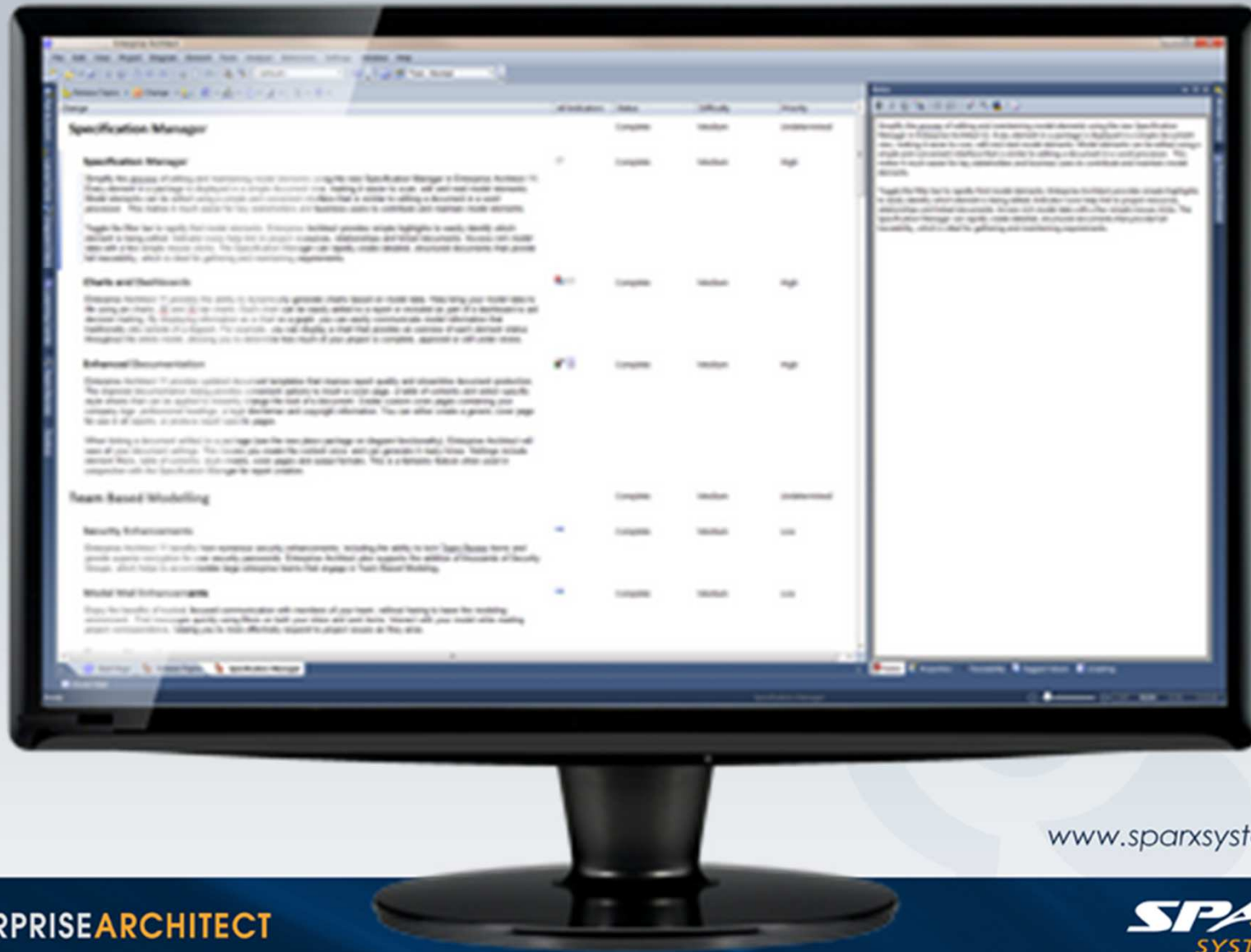
www.sparxsystems.eu

EA 11 Charts



www.sparxsystems.eu

EA 11 Specification Manager



www.sparxsystems.eu

Fragen und Antworten

Alle

