



# Big software, meet Plastic

Version Control for large-scale software projects

**Francisco  
Monteverde**

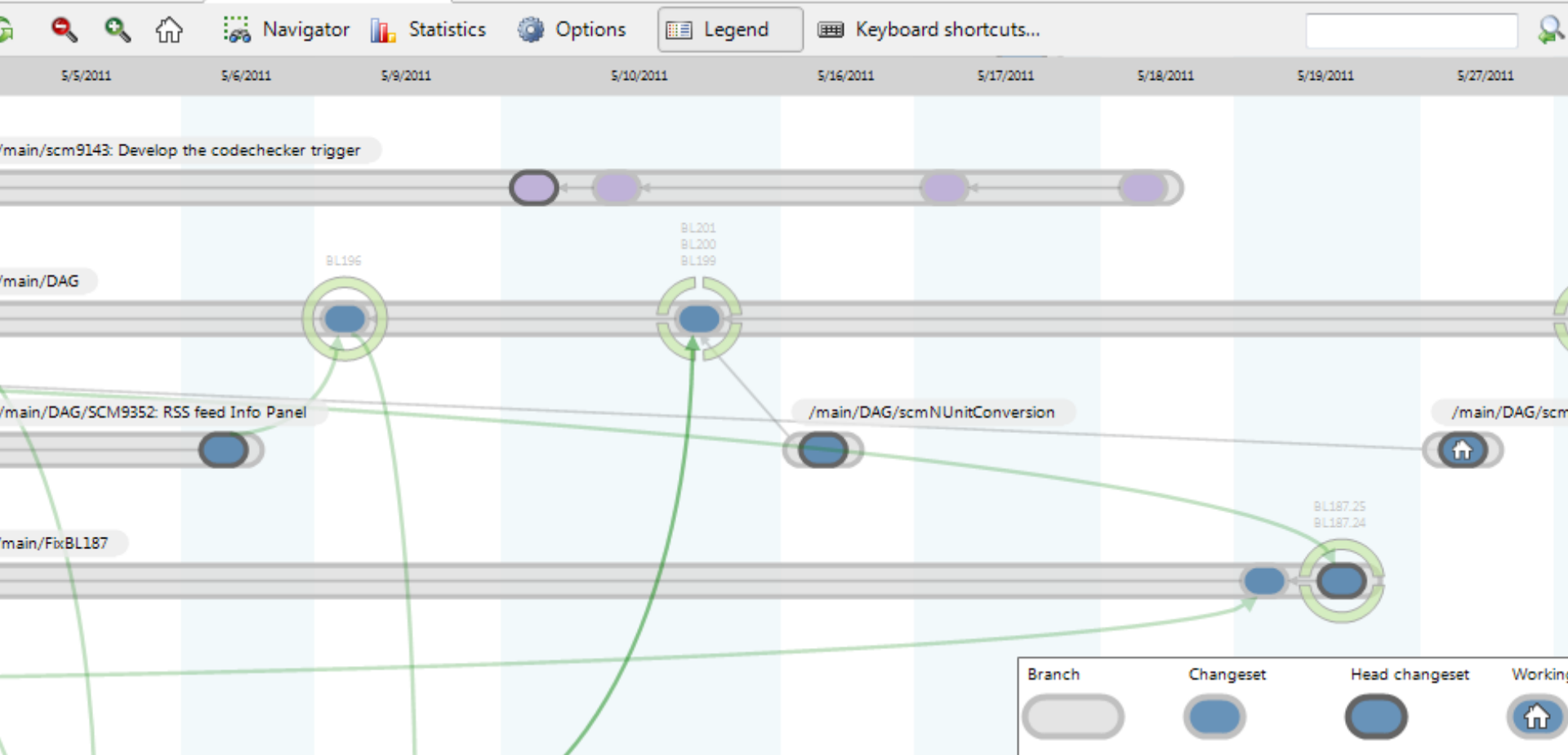
CEO Codice Software  
fm@codicesoftware.com

“The Cadillac of the SCMs” - *eWeek*

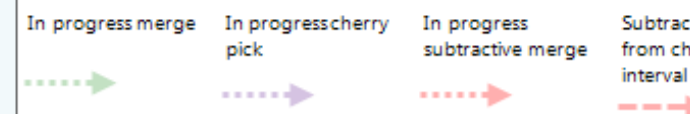
[www.plasticscm.com](http://www.plasticscm.com)  
@plasticscm

Computers, Mobile Phones, Tablets, Internet Services, Video Games, Consoles,  
Financial Services, Telecommunications, Automobiles, Transportation, Healthcare,  
Commerce, Distribution, Industrial Manufacturing... ..

**TODAY SOFTWARE IS ALMOST  
EVERYWHERE....AND INCREASING**



## VERSION CONTROL IS AN ESSENTIAL FUNCTION WITHIN SOFTWARE DEVELOPMENT



# The Problem with Software Development: Limited Productivity, Low Quality Code

1. **Development in serial mode** (not parallel) creates many dependencies and continuous broken builds
2. **Developers need to be connected** to central server to use the Version Control tool



**Distributed Version Control Systems (DVCS)**

# Introducing Plastic SCM

Branching and Merging is GOOD!

***The Only Commercial Enterprise Distributed  
Version Control Systems (DVCS) for Teams of Any  
Size, Enabling Parallel and Distributed  
Development that works***

**Integrated with Polarion ALM:**  
Closing the GAP between  
Requirements & Code



# Polarion ALM & Plastic SCM Working Together

- Plastic SCM integrates with Polarion using “branch per task” and “task per cset”
- Branches can be created listing the assigned and open tasks
- Alternatively, individual changesets can be linked to Polarion tasks
- Quick access from Plastic SCM GUI to Polarion info

# Codice Software

## Company Background

**Funded** | 2005

**Products** | Plastic SCM & Semantic Merge

**Investors  
(VC):** | Bullnet Capital

**HQ's** | Valladolid (Spain) & Silicon Valley  
Office

**Distribution** | US/Canda, EU, Israel, South Korea

### Some Global Customers:



# Codice Software in US Developer's Press



**Jeff Cogswell**

*Plastic SCM is the Cadillac of the SCM's*



**Adrian Bridgwater**

*Heavy Refactoring In Parallel?  
No Problem.  
Semantic Merge World's:  
First 'Language-Aware'  
Source Code Merge Tool*



**Eric Caoili**

*Plastic SCM 4.0 solution for  
game developers, designed in  
collaboration with Digital  
Legends Entertainment"*



792,426 Apr unique visitors

**Anand Narayanaswamy**

*GitSync for Plastic SCM with  
Native Git Protocols and  
Visual Studio 2012 Support  
Plastic SCM to push and pull  
code changes to not only  
GitHub but also Codeplex,  
BitBucket or any Git server*



**Alex Handy**

*As GDC opened on March 25,  
Codice announced a new tool  
that allows this SCM system  
to integrate with Git  
repositories*



**WireNews**

*Codice Software Launches  
First Language-Aware Source  
Code Merge Tool*



# Codice Software Core Values

---

## 1. Proven Technology

- Leading DVCS implementation for Enterprises
- 350 man years development (\*)
- Key Enterprise references

---

## 2. Customer Focused

- Flexible to customer improvement demands
- Professional support and quick turn around
- Assistance in the deployment and to improve the development processes.

---

## 3. Strive for Excellence

- Experienced, professional and passionate team fully dedicated to make the best DVCS.
- 

(\*) Following COCOMO Model (**C**onstructive **C**ost **M**odel, from [Barry W. Boehm](#), 1981)



**“Please, come and  
talk to us...”**

**Thank you... 😊**

**Francisco Monteverde**

CEO Codice Software

fm@codicesoftware.com

[www.plasticscm.com](http://www.plasticscm.com)

@plasticscm



# POLARION & PLASTIC SCM INTEGRATION

# Closing the GAP between Requirements and Code

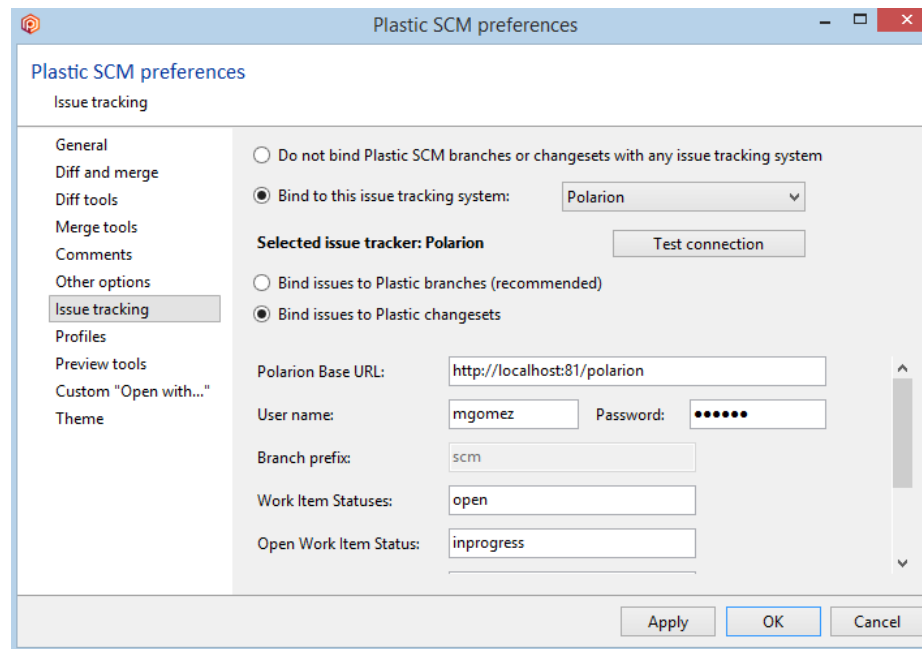
- Plastic SCM enables teams to implement centralized and distributed workflows and agile branching patterns
- And it integrates with Polarion ALM to close the gap between code and requirements

# Polarion ALM & Plastic SCM Working Together

- Plastic SCM integrates with Polarion using “branch per task” and “task per cset”
- Branches can be created listing the assigned and open tasks
- Alternatively, individual changesets can be linked to Polarion tasks
- Quick access from Plastic SCM GUI to Polarion info

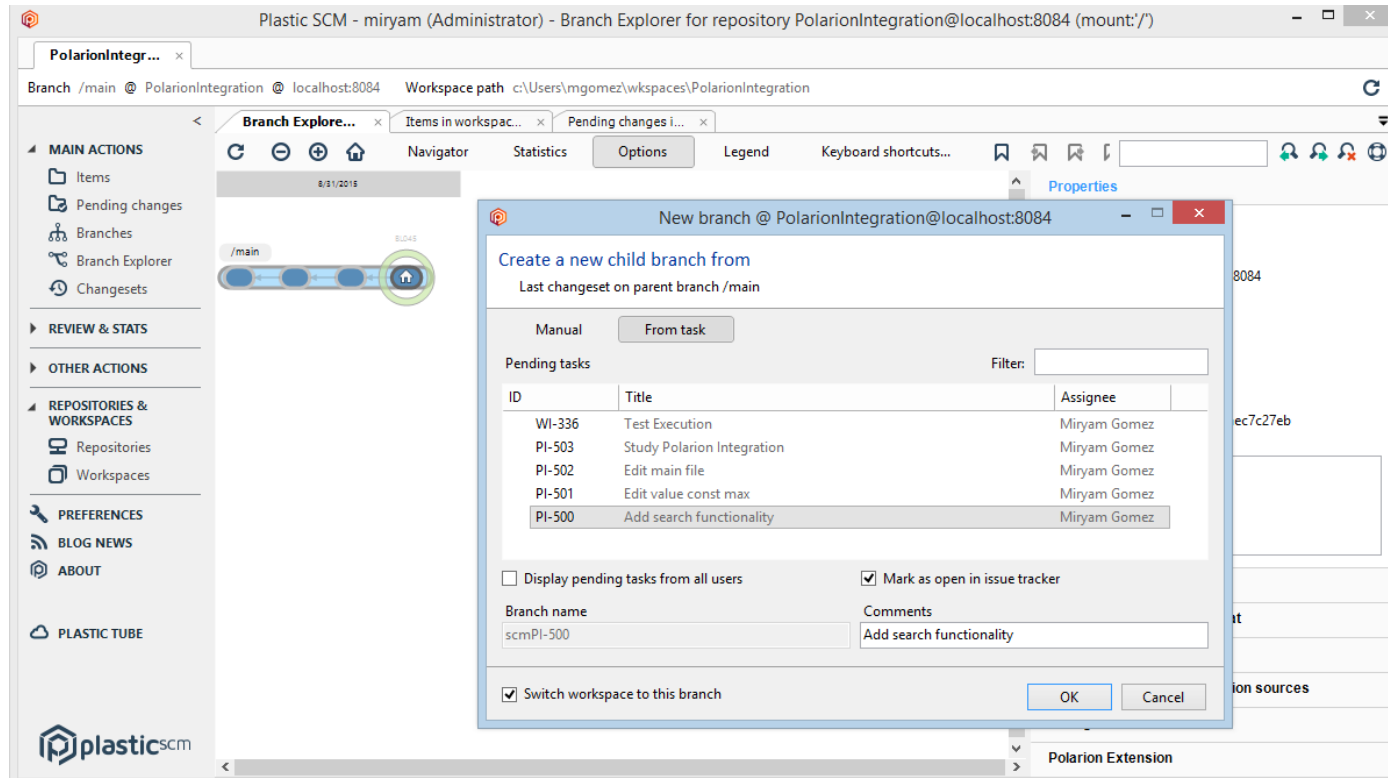
# Polarion

- Plastic SCM integrates with Polarion using “branch per task” and “task per cset”.
- Both modes can be setup graphically:



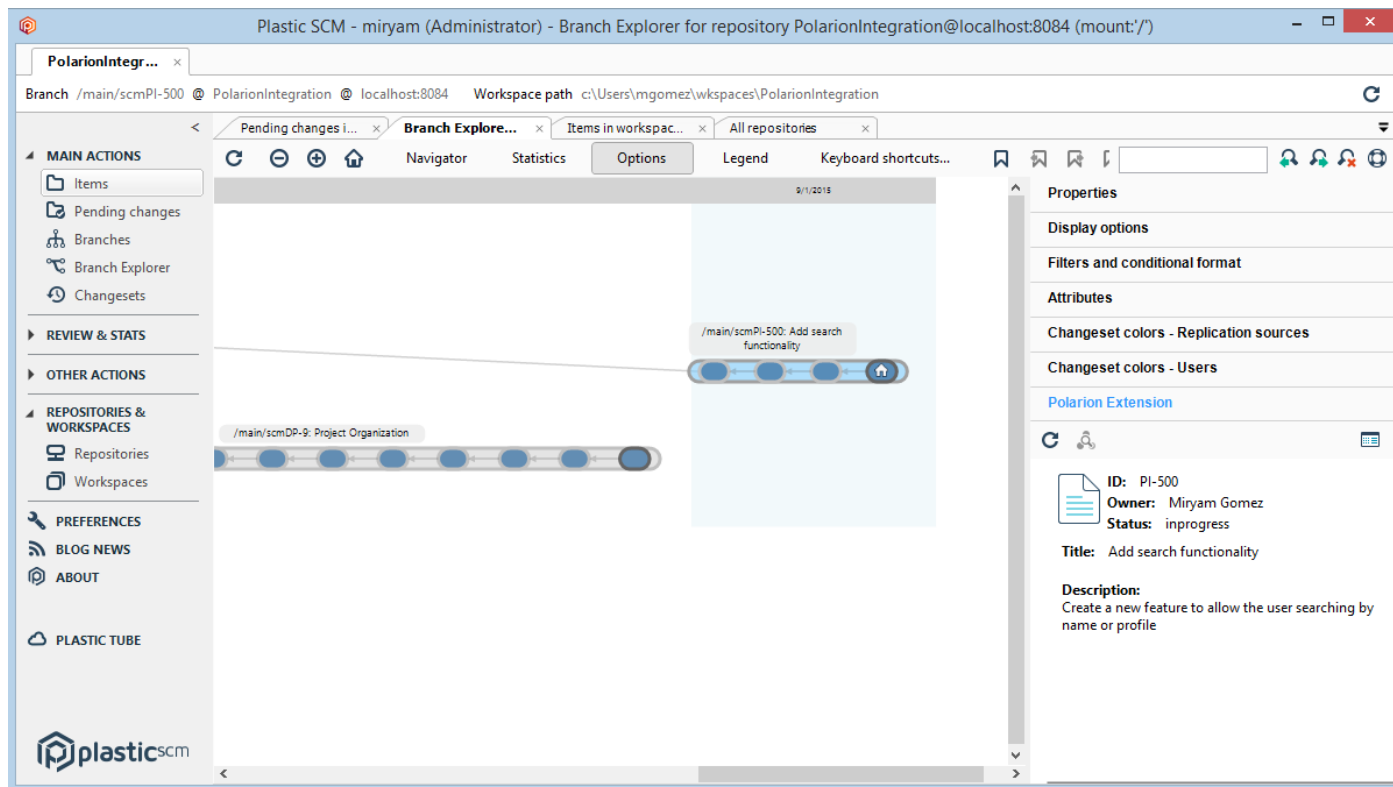
# Create branches from tasks

- Branches can be created listing the assigned and open tasks



# Access to Polarion info

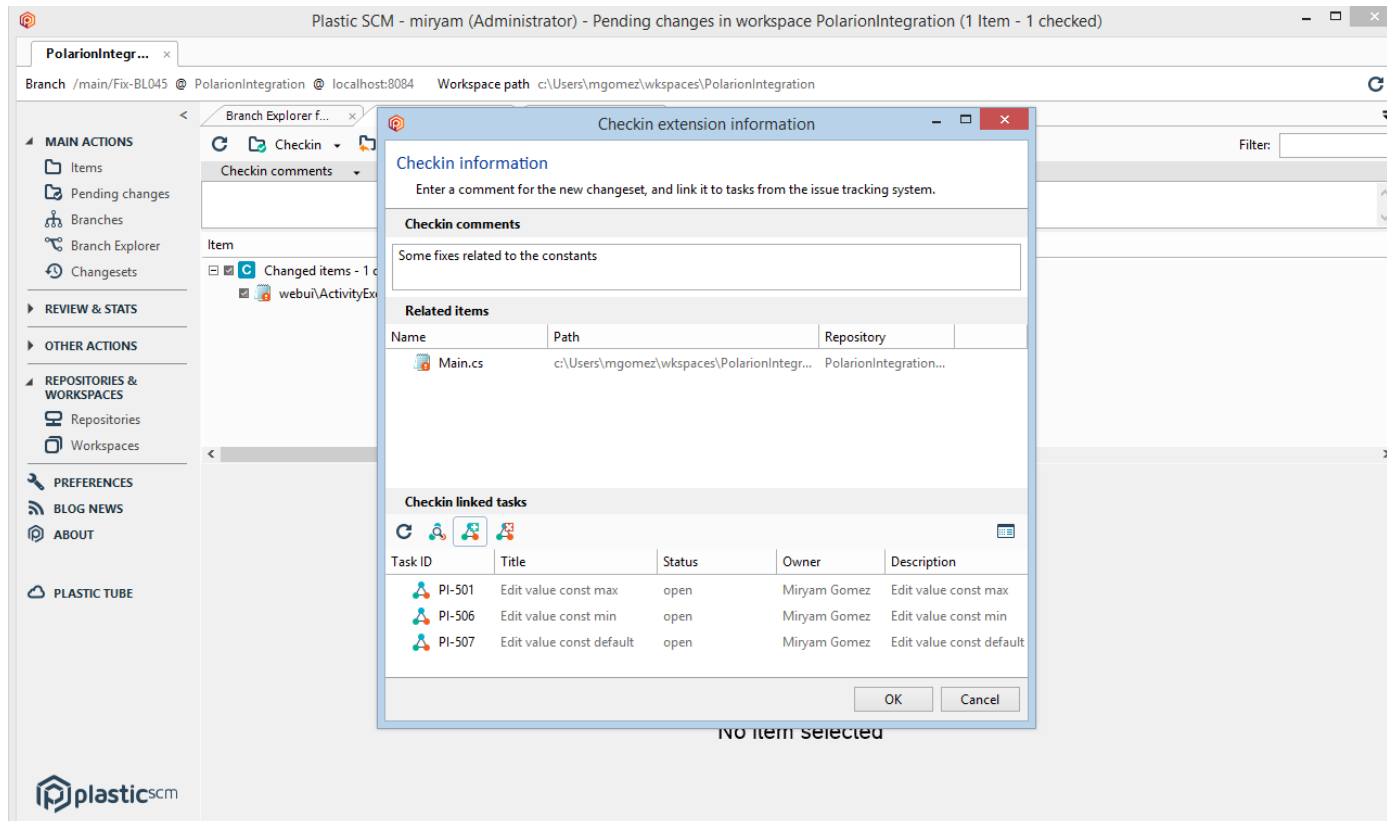
- The Plastic SCM GUI provides quick access to Polarion info





# Individual changeset linking

- Alternatively, individual changesets can be linked to Polarion tasks



# Advanced configuration

- Advanced config to choose which work items can be listed from Plastic SCM

